

*Ice
Theatre
of
New York*

CELEBRATING THE JOY
OF DANCING ON ICE

SPRING UNPLUGGED

PERFORMANCE AND VIP PARTY



THURSDAY, MAY 17, 2018

SKY RINK AT CHELSEA PIERS

BLUE RIBBON GIVES ITS
UTMOST SUPPORT TO ICE THEATRE'S
2018 SPRING UNPLUGGED
PERFORMANCE AND VIP PARTY.



BROMBERG BROS.

BLUE RIBBON

RESTAURANTS®

ABOUT THE COMPANY

Ice Theatre of New York's mission is to create and advance dance on ice as an ensemble performing art and to provide education and public performances to people of all ages. Founded by Moira North in 1984, ITNY created the first not-for-profit professional ice dance company in the U.S. and was the first to receive funding from the National Endowment for the Arts, the New York State Council on the Arts, and the New York City Department of Cultural Affairs.

- ITNY has created exclusive works by choreographers as varied as Edward Villela and Jody Sperling, modern dance choreographers Jacquelyn Buglisi, Elisa Monte and David Parsons, Performance Artist Ann Carlson and Emmy Award Winner Charles "Chucky" Klapow.
- ITNY trains company skaters and guest skating artists in its weekly Master Edge Classes at Chelsea Piers Sky Rink.
- We continue to collaborate with choreographers from both the dance and skating worlds, while exploring creatively exciting relationships with artists from theatre, music, and new media disciplines.
- ITNY is dedicated to making performances accessible to diverse audiences and presents many free performances featuring the current repertory throughout New York City.

ITNY also achieves its public arts and education mission by:

- commissioning new choreography, with pieces created by recognized and emerging dance and ice skating choreographers;
- offering free admission to more than a dozen public performances each year;
- holding free Master Edge Classes led by ITNY dancers for ice skating professionals and enthusiasts; and
- offering apprentice/training programs for aspiring ice dance artists; and facilitating educational programs on ice dancing and figure skating for school-aged children in Brooklyn, Queens and Upper Manhattan.

62 Chelsea Piers, Suite 308, New York, NY 10011
(212) 929-5811 • itny@icetheatre.org • icetheatre.org



FOUNDER/DIRECTOR

Moira North

EXECUTIVE DIRECTOR

Jirina Ribbens

ENSEMBLE DIRECTOR

Elisa Angeli

ADMIN. ASSOC.

Justice Lee McConahe

GRANT WRITER

Mary Dugan

BOARD OF TRUSTEES

CHAIR William J Candee IV

VICE CHAIR Betty Wasserman

PRESIDENT Moira North

SECRETARY Frances Black

TREASURER Mary Gaillard

George Akst

Jessica Betts

William J Candee III

Mike Clayton

Violet Eagan

Stephen G Epstein

Julie Glennon

David Mellins

Susan Numeroff

ARTISTIC ADVISORY

COUNCIL

Elise Bernhardt

Dick Button

Richard Caples

Ann Carlson

Catherine Chalmers

Josef Koudelka

Ethan Lercher

Meredith Monk

Ken Shelley

Valerie Simmons

Paula Wwagener

*Ice
Theatre
of
New York*

CELEBRATING THE JOY
OF DANCING ON ICE

**SAVE
THE
DATE**



2018 BENEFIT GALA
Monday, October 15, 2018

Honoree Olympic Champion **KRISTI YAMAGUCHI**

Ice Angel **VIOLET EAGAN**

Alumni Award **STEPHANEE GROSSCUP & KENNY MOIR**

Keeping this art form alive is dependent upon generous donors like you.

To support Ice Theatre of New York visit:

icetheatre.org



SPRING UNPLUGGED

2018 PERFORMANCE AND FUNDRAISER

EVENT CHAIRS

Nicole Scheiner
Betty Wasserman

**GUEST ARTIST &
2018 WILL SEARS
AWARD WINNER**
Ross Miner

FOUNDER/ARTISTIC

DIRECTOR
Moira North

**2018 WILL SEARS
AWARD WINNER**
Mark Mitchell

EXECUTIVE

DIRECTOR
Jirina Ribbens

GUEST ARTISTS
Mauro Bruni and Kiira Korpi

**ENSEMBLE
DIRECTOR**
Elisa Angeli

ICE THEATRE OF NEW YORK
Jake Bennett, Jordan Cowan,
Kate Gauthier, Jennifer Gruver,
Jessica Huot, Valerie Levine,
Stephanie Spencer, Tara Nicole Stamm,
Conor Wagar, and Sally Jeanne Watkins

**ADMINISTRATIVE
ASSOCIATE**
Justice Lee McConnahea

ABSURD FIGURES
Kate Mangiardi

**DEVELOPMENT
COORDINATOR**
Mary Dugan

ITNY JUNIOR ENSEMBLE
Emily Bleiberg, Anna Faulkner,
Ciara Flaherty, Rae Han,
Jordyn Katz, Catherine Mayer,
Electra Scheiner, and Milly Wasserman

**EVENT CHEF
COORDINATOR**
Gabrielle Ortiz

SOUND OPERATOR
Chris Lipari,
Lipari Production

**YOUTH PERFORMING
APPRENTICES**
Oona & Gage Brown
Charlotte Parker Hughes



**CELEBRATING THE JOY
OF DANCING ON ICE**

SPRING UNPLUGGED

PERFORMANCE

(Program subject to change)

ABSURD FIGURES

Performed by **Katherine Mangiardi**

Poem from Serpentine Loop by **Elee Kraljii Gardiner**

Collaboration between **Moira North and Elee Kraljii Gardiner**

11H11

Performed by **Jordan Cowan, Kate Gauthier, Jennifer Gruver, Jessica Huot, Stephanie Spencer, Tara Nicole Stamm, Conor Wagar, and Sally Jeanne Watkins**

Composed by **Raphaël Beau**

Choreography by **Line Haddad**

With the past and future trying to get our attention, we tend to forget the present.

ARCTIC MEMORY

Performed by **Valerie Levine**

Choreography by **Jody Sperling**

Composed by **Brooks Williams and Beo Morales**

Costume by **Mary Jo Mecca**

Made possible with funding by Gertrude Vanderbilt Endowment

This version of "Arctic Memory" is adapted from material Sperling developed during a 43-day polar science mission to the Arctic. While there, as the first and to-date only choreographer-in-residence aboard a US Coast Guard icebreaker, Sperling danced on sea ice and made the short film "Ice Floe," winner of a Creative Climate Award. The work draws inspiration from modern-dance pioneer Loïe Fuller (1862-1928). The costume is a long cape, hand-painted with designs suggestive of Arctic pack ice.

I JUST CANT WAIT TO BE KING

Performed by **Charlotte Parker Hughes**

Music from **The Lion King**

Choreography by **Tracy Doyle and Debbie Starkman**

LA CUMPARSITA

Performed by **Oona & Gage Brown**

Music by **Milva**

Choreography by **Andrew Lavrik**

REVERIE

Performed by **Emily Bleiberg, Anna Faulkner, Ciara Flaherty, Rae Han, Jordyn Katz, Catherine Mayer, Electra Scheiner, and Milly Wasserman**

Composed by **Claude Debussy**

Choreography by **Elisa Angeli**

DANSE MACABRE

Performed by **Jessica Huot and Conor Wagar**

Composed by **Camille Saint-Saëns**

Choreography by **Natalia Linchuk**

AFTERNOON OF A FAUN

Performed by **Mauro Bruni**

Prelude à L'Après-midi D'un Faune by **Claude Debussy**
Frederico Callante & Royal Shield Symphony Orchestra

Choreography by **Mauro Bruni**

Costume by **Mauro Bruni**

I'M ONLY HUMAN AFTER ALL

Performed by **Kiira Korpi**

Music by **John 'The Ragin' Cajun' Jones**

Choreography by **Elisa Angeli**

NEW YORK STATE OF MIND

Performed by **Ross Miner**

Music by **Billy Joel**

Choreography by **Jamie Isley**

LOVE RUNS OUT

Performed by **Jake Bennett, Jordan Cowan, Kate Gauthier, Jennifer Gruver, Jessica Huot, Stephanie Spencer, Tara Nicole Stamm, Conor Wagar, and Sally Jeanne Watkins**

Music by **One Republic**

Choreography by **Elisa Angeli**

AWARD PRESENTATION

Will Sears Award in memory of the National Novice Pairs Champion who tragically passed away in 2002. The award honors a skater who demonstrates exceptional daring and persistence in pursuit of his passion. Presented to Ross Miner and Mark Mitchell.

ABOUT THE EXECUTIVE STAFF

MOIRA NORTH (Founder/Artistic Director) Named one of the 25 Most Influential Names in Figure Skating by International Figure Skating Magazine, Moira North has been a driving force in the development of figure skating as a performing art. Since founding Ice Theatre of New York in 1984, she has commissioned renowned dance choreographers to make new works for the company while nurturing and developing choreographers from the world of ice. She has also been a catalyst in the development of other artistic ice dance companies in both Canada and the United States. Moira and partner Patrick Dean skated ITNY's first work, a collaboration with Belgian dance choreographer Marc Bogaerts, which won them first place in the Free Dance at the Professional Championships in Jaca, Spain. In her subsequent work as ITNY Director, Moira has continued to integrate contemporary dance into the repertoire of ice choreography. Moira's latest collaborations included productions with opera singer Alica Hall Moran, singer/composer Theo Bleckmann and the exhibition "New York on Ice" at the Museum of the City of New York.

ELISA ANGELI (Ensemble Director/Choreographer) An Italian ice dancer with recognition from the Italian Federation for Ice Skating, who studied Ballet with Ludmilla Vlassova (Bolshoi) and Giovanna Franzosi in Milan, and with Christine Wright at the Gibney Dance Center. She also studied Modern and Contemporary Dance at the Open Dance Center, New York, and at the Music, Art and Shows School, Milan. She studied Aerial Silks at the Streb Lab and at the Trapeze School in New York. Elisa had several years of contortion and extreme flexibility classes with J. Noan and O. Karmansky. Her expertise as a circus arts specialist allows Elisa to bring a unique element of excitement when skating as a principal performer and aerialist with Ice Theatre of New York. In 2009, Elisa participated with ITNY at the Premiere of "Wintuk" by Cirque du Soleil at Madison Square Garden. In Italy, she was an aerialist with the tour "Italian Champions on Ice," with Ghiaccio Spettacolo, and performed in Munich with Spotlight Productions. Elisa has been with ITNY since 2008, and was on ITNY's 2008 tour in France. In 2015 she became ITNY's Ensemble Director. Elisa also works with Cirque-tacular Entertainment as an aerialist (since 2014), with which she performed in the show "The Art of Circus" in September 2016.

JIRINA RIBBENS (Executive Director) joined the Ice Theatre of New York staff in December 2004, after serving on the board since the founding of the company. Over the past 13 years, Jirina has overseen ITNY's growth, such as the expansion of its outreach programming for public school children, the addition of ongoing edge classes for ice artists and ITNY's entry into new media, including a collaboration with Improv Everywhere which received over 4 million views on YouTube. Prior to her work with ITNY Jirina worked in a variety of positions in the entertainment and sports industries. During her time at Candid Productions she produced and managed events with two-time Olympic Champion Dick Button. She also worked as an Olympic sports consultant and producer for the networks at nine Olympic Games. In 2002 she received a Sports Emmy for Outstanding Live Sports Special, as Associate Producer for NBC for the Salt Lake City Olympic Winter Games.

JUSTICE LEE McCONNAHEA (Administrative Associate) joined ITNY in February of 2014 after having led a career that spans across film, television, and stage. He is best known for his reoccurring role on Fox's hit comedy, "Glee." Throughout his career, he has had many roles in such notable television series as "Grey's Anatomy," "True Blood," "How I Met Your Mother," "Revenge," "Modern Family" and "90210." He's also lent his talent to such Feature Films as "The Muppets," "Rock of Ages," "The Dark Knight Rises," "Divorce Invitation" and others. In addition to his experience in Film and Television he has worked as an Associate Publicist

with Levine Communications whose clients included Paul Stanley, Diamond Dallas Page, Pia Zadora, and the late Donna Summer.

MARY DUGAN (Development Coordinator) joined ITNY in December 2016 after a career in grant writing both for the Arts and for advocacy organizations and public schools, as well as serving nine years as a grant maker for the Jarvie Commonwealth Service, which helped the elderly maintain their quality of life. In the Arts, she won grants for Harmonie Ensemble/New York and the Dwana Smallwood Performing Arts Center, while also having a long history winning grants for public schools and organizations advocating for immigrants, youth, and reproductive rights.

HONOREES

ROSS MINER (Special Guest) Ross Miner is the 2013 and 2018 U.S. National Silver medalist. At the U.S. Nationals this past January in San Jose, Ross was the only man to skate two clean programs, including “an exhilarating long program that found him in second place, behind only Chen, when all was said and done,” wrote Christine Brennan in USA Today. “If he were a swimmer or a runner, he would have been headed to the Olympic Games.” Alas, it was not to be. Through a vote of the International Committee, he was not chosen. Forbes’ Carol Schram headlined, “Ross Miner’s Olympic Snub Should Fuel Change in U.S. Figure Skating’s Selection Process.” Yes, it should. Ross started skating at age 3 and through his early teen years, he was a figure skater as well as a hockey player. While he focused keenly in competition, his coaches complained that his focus was not there for everyday training. Then, his parents presented him with a choice: to develop his talent seriously as a figure skater, or to stay with a recreational approach. With their guidance, Ross, age 14, chose to affiliate with the Skating Club of Boston where he started working with coaches Mark Mitchell and Peter Johansson. This duo guided him to his successes.

MARK MITCHELL (Special Guest) is three-time US National medalist at the Senior Level and twice a World Team member. He toured for four years with Champions on Ice and turned professional in 1994 and competed professionally until 1997. After retiring from performing, Mark began coaching in Boston with Peter Johansson. Together they have coached multiple National medalists, Team USA members, and World Competitors. Three times they have won the PSA/USFS Developmental Coach of the year award and in 2006, they received the US Olympic Committee’s Development Coach of the Year Award. They now have their own skating school, Mitchell Johansson Method, in Revere, MA.

ABOUT THE COLLABORATORS

ELEE KRALJII GARDINER (Writer & Editor) is the author of the book of poems *serpentine loop* (Anvil Press), one of 2016’s “most anticipated spring releases” and named to three “Best of” lists of the year in Canada. She is the co-editor with John Asfour of *V6A: Writing from Vancouver’s Downtown Eastside* (Arsenal Pulp Press, 2012), which was shortlisted for the 2012 City of Vancouver Book Award, and her second book of poems, *Tunica Intima* (forthcoming 2018), has already been shortlisted for the Robert Kroetsch Award for Innovative Poetry. She founded Thursdays Writing Collective, a non-profit organization of more than 150 writers in Vancouver, and she is the editor and publisher of eight of its anthologies. Elee is the daughter of Olympic gold and silver medalist Dr. Tenley Albright and is a dual US/Canadian citizen.

LINE HADDAD (Choreographer) is a World and Olympic pair skater and was the youngest

athlete to compete at the Olympics. Former student of Olympic Champion Oleg Vassiliev, she is two-time French National Champion and one-time Israeli National Champion. As a dancer, she graduated from the Paris Conservatoire in ballet and has also trained and performed in modern dance and Argentine tango (NY City Center, Google, NY Live Arts, and The Madison Theatre). Line is an international choreographer and a consultant for the French Ice Skating Federation. She choreographed for various international skaters; among them are top-five Olympic team Vanessa James/Morgan Cipres, world competitors Lola Esbrat/Andrei Novoselov and Laurine Lecavalier. She also coached skaters at ISU Grand Prix events (Skate America, Trophée de France). After touring with Philippe Candeloro and the French team, she joined Ice Theatre of New York as a performer and worked with choreographers such as David Parsons, Doug Webster and David Liu. She was also featured in “Dance Visions on Ice” on NBC starring Nancy Kerrigan and Evgeni Plushenko, as well as in an episode of the TV show “Glee.” Academically, she received her Master of Arts in translation and linguistics in Paris, majoring in French, English and Spanish.

JODY SPERLING (Choreographer) A dancer-choreographer from New York City, Jody Sperling is the Founder and Artistic Director of Time Lapse Dance. She has created 40-plus works, including many furthering the legacy of modern dance pioneer Loie Fuller (1862–1928). Considered the preeminent Fuller stylist, Sperling has expanded the genre into the 21st century, deploying it in the context of contemporary performance forms. She has been nominated for a 2017 World Choreography Award for her work on the French feature film “The Dancer” (which premiered at the 2016 Cannes Film Festival), inspired by Fuller’s life. Years of working in Fuller’s idiom, which involves kinesphere-expanding costumes, has influenced Sperling’s awareness of the body’s relationship with the larger environment. In 2014, she participated in a polar science mission to the Arctic as the first, and to date only, choreographer-in-residence aboard a U.S. Coast Guard icebreaker. During the expedition, she danced on Arctic sea ice and made the short dance film “Ice Floe,” winner of a Creative Climate Award. Sperling’s current projects focus on using visual-kinetic narratives to connect choreography and climate science.

ABOUT THE PERFORMERS

JAKE BENNETT (Performer) is a British Pairs skater, who has recently relocated from the UK to New York City. He is a three times National pairs champion and competed at the Junior World Championships. After a shoulder injury and subsequent operation Jake turned his passion for skating towards coaching which he has been doing full time for over a decade, he has coached skaters from first steps to ISU international level and hopes to continue his success in the US. He is delighted to perform with ITNY.

MAURO BRUNI (Performer) is a previous US national and international competitor, has performed in over 25 countries, and is a freelance graphic artist and fashion designer. He earned a BFA, graduating Cum Laude from the Univ. of Southern California. Credits Include: Principal skater with numerous companies including 11 years with Holiday on Ice, 6 Willy Bietak productions, Ucha Atayde Entertainment, Arena International, Dynamic Shows GmbH, American Ice Theatre, Wheeler Productions, and now 4 years with the Ice Theatre of New York. He is also a coach and choreographer for international competitors at the Trelleborgskonståkningsklubb in Sweden. Mauro is thrilled to reprise his Afternoon of a Faun, inspired by Vaslav Nijinsky and John Curry.

JORDAN COWAN (Performer) has always loved to dance and perform. He started skating in Los Angeles and a few years later relocated to Michigan to find a partner in Ice Dancing. Over his and Anastasia Olson’s competitive career, they went to U.S. Nationals five times

and competed internationally for Team USA. After their partnership ended in 2012, Jordan switched his focus to ballroom dancing, both teaching and competing professionally, moving from Michigan to New York in the process. He now studies Computer Science at City College while he coaches ice dancing in and out of the city. Jordan is thrilled to join ITNY and have the opportunity to bring his love for dance back to his first passion, the ice.

KATE GAUTHIER (Performer) grew up in the beautiful Rocky Mountains of Banff, Alberta. In true Canadian fashion, she learned to skate at the age of four on the pond behind her house. She is a Canadian Nationals Senior Ladies Competitor and Quadruple Gold Award recipient. After her competitive career, she spent eight years travelling the world as a Principal Performer for Disney on Ice. Her passion for live entertainment also expands to the stage and screen. After studying acting at the New York Film Academy, Stella Adler Studio for Acting and The Upright Citizens Brigade Theatre, she has had the pleasure of performing in several film and theatrical productions. She is thrilled to continue her career as a multifaceted artist here in New York City, and elated to be performing with ITNY.

JENNIFER GRUVER (Performer) fell in love with the sport of figure skating at the age of six and that love has not wavered in her 21 years of skating. A Colorado native, Jennifer spent 16 years competing in the Southwestern Region before following her dreams of becoming a professional performer. After graduating from the University of Colorado with a Bachelor of Science Degree in Anthropology, Jennifer spent 5 years traveling the world with Disney On Ice. She wrapped up her touring career in December 2016 to chase down more of her dreams in New York City. In the short time she has lived here, she finds herself coaching, choreographing and performing more than ever. Jennifer will be graduating with a Master's Degree in Tourism Management in Spring 2018. She had her debut performance with ITNY at Spring Unplugged 2017.

JESSICA HUOT (Performer) is the Executive Director of Figure Skating at Sky Rink Chelsea Piers where she also gives private skating lessons. Jessica is a six-time Finnish National Ice Dance Champion and USFS quadruple gold medalist. She and her ice dance partner competed in the World and European Figure Skating Championships in 2002-2004 as well as the Junior and Senior Grand Prix competition circuits from 1999-2003. Jessica received her Bachelor of Science in 2006 from the Massachusetts Institute of Technology, majoring in Brain and Cognitive Sciences. She went on to earn her Master of Music degree in Piano Performance from New York University in 2012. In addition to teaching skating, she gives private piano lessons in the NYC area. She has performed as a principal dancer for ITNY since 2010.

KIIRA KORPI (Performer) is a professional figure skater from Finland. She is 5-time Finnish National Champion, two time Olympian and 3-time European medalist. She stopped competing in 2015 and she now lives in NYC. Kiira has been performing all over the world with a lot of the greatest skaters in the world. The most recent show she did as a protagonist was "Intimissimi on ice" in Verona, Italy, where she performed together with Andrea Bocelli, Stéphane Lambiel, and more. After the stressful competitive career Kiira has found a new kind of joy and creativity in skating, and she hopes that people can feel the love and light shining through her skating.

VALERIE LEVINE (Performer) has been dancing tap, jazz and ballet since she was 4 years of age and started roller-skating at that time. After begging her parents for figure skating lessons, she started training at 11. She auditioned for Disney On Ice during high school and was accepted but decided to get her bachelor's degree in college first. She went on to get her Senior Ladies Moves and Pre-golds in ice dance by 19 and skated as an ice girl for the NHL teams the New York Rangers and the New York Islanders during those years. She furthered her dance knowledge while in college getting her Bachelor's Degree in Product Management Textiles from the Fashion Institute of Technology. She minored in dance and trained at the Broadway Dance

Center in many dance styles, which led her to her current career as a professional belly dancer, ballroom dancer, Brazilian samba dancer, fire performer and the like. Valerie has collaborated on Ice ITNY events for the past decade. You can find out more about Valerie Levine on her website: Valerinadance.com

KATE MANGIARDI (Performer) is the Skating Manager at Chelsea Piers Connecticut and a USFSA gold medalist in Moves in the Field. She has been coaching throughout the tristate area for the past 15 years and currently is the assistant Intro and Beginner coach for the Skyliners Synchronized Skating Team. After receiving her Bachelor of Arts from Vassar and MFA in painting from RISD, she has been exhibiting her work in various museums and galleries. In 2009, Mangiardi was awarded the W.K. Rose Fellowship in the Creative Arts. Solo exhibitions include, "Paintings," Butler Institute of American Art, Youngstown, Ohio, and "Reflected Absence," The Hunterdon Museum of Art, Clinton, NJ. Recently, Kate had begun to merge her experience as a skater into her work. In "Tracings," a video currently on view at the HVCCA in Peekskill, NY she skates a design of her own creation. Kate is excited and grateful for the opportunity to explore this new direction in her work with ITNY.

STEPHANIE SPENCER (Performer) grew up in the mountains of Vermont and fell in love with skating at the age of 10. In addition to skating Stephanie also studied acting and ballet. After graduating with a degree in theatre from Middlebury College, she was thrilled to have the opportunity to perform on New York ice stages when she started skating with ITNY in the Spring of 2015. She has been coaching skating for over a decade and loves bringing the joy of the ice to skaters of all ages.

TARA NICOLE STAMM (Performer) is an International Choreographer/National Coach, Dancer, and Movement Consultant. She has a Bachelor in Dance from the University of Wisconsin, and a Master's in Dance/Movement Therapy from Columbia College-Chicago. She is a 2-time USFS Gold Medalist in Ice Dance and Moves in the Field. She has been integrating her knowledge of Laban Movement Analysis with the sport of figure skating through SOMA, techniques specializing in how the body moves through time, weight and space to enhance the full body potential on the ice. She is an IJS components coach—specializing in all 5 categories—and works closely with athletes to educate, develop and improve their performance to maximize their score. She also has a passion for working with skaters who have special needs. She joined ITNY in 2015. Tara Nicole is a member of USFS, PSA, and the American Dance Therapy Association.

CONOR WAGAR (Performer) first became interested in skating at the age of 10, when he was taken to a Disney on Ice show. Amazed by the performers, he begged his parents to sign him up for lessons. Under the guidance of his coach, Doris Papenfuss, he competed at Junior Nationals with only two years of skating under his belt. Conor went on to compete at Eastern Sectionals and was an alternate for US Nationals. He also became a triple gold-medalist in Moves in the Field, Freestyle, and Ice Dance. Towards the end of his amateur career he went on to join the touring company of Disney on Ice and since 2015 he has performed with the talented, amazing cast of ice performers in ITNY.

SALLY JEANNE WATKINS (Performer) is a U.S. Figure Skating triple gold medalist and holds an Intercollegiate National Senior Ladies title. While Sally enjoys skating professionally, she also loves coaching and learning aerial arts. She recently earned her Masters in Environmental Engineering from NYU. Originally from Seattle, Washington, she currently lives in New York City. Sally Jeanne is the Figure Skating and Special Events Director at the World Ice Arena in Queens, and has been performing with ITNY since 2013.

THE CAST



Jake Bennett



Mauro Bruni



Jordan Cowan



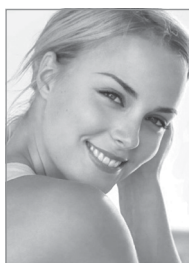
Kate Gauthier



Jennifer Gruver



Jessica Huot



Kiira Korpi



Valerie Levine



Stephanie Spencer



Tara Nicole Stamm



Conor Wagar



Sally Jeanne Watkins



Ross Miner



Mark Mitchell



OUR FAMILY OF SUPPORT

Gertrude Vanderbilt Endowment

Designated to support the development of choreography for dance on ice.

The Will Sears Fund

In memory of Will Sears.

OLYMPIANS

\$20,000 & up

Lisa McGraw Skating Foundation
Joseph Kasputys
NYC Department of Cultural Affairs
S. F. Foundation

COMMISSIONERS

\$10,000 - \$19,999

Bloomberg Philanthropies
William J Candee III
Violet & Chris Eagan
Moira North
Margarita Sears

GUARDIANS

\$5,000 - \$9,999

George Akst
Josh Babb
Clara & Victor Battin Foundation
Missy Van Buren Brown & Thomas W. Brown
Stephen Epstein
Ernst Katzman Family Foundation
Mary Gaillard
Juliet Glennon
John & Amy Hughes
Ice Rink Events
Council Member Mark Levine
Linda & David Tewksbury
Lee Traub
Betty Wasserman

BENEFACTORS

\$2,500 - \$4,999

Deborah & Dominic Addesso
Lori & Carswell Berlin
William J Candee IV
Jamie Caro
Chelsea Piers Management
Denise Hurley

Christie Jenkins
Ron Kraut
Keith Lichtman
Mitch Lippman & Michael Barrett
Ivan Lomeli Avedaño & Maria Luque
David Mellins
Francine Mozer
Nazem Family Foundation
Angelo Silveri
Lynette & David Snow
Paula Wagener
Vera Wang

ICE ANGELS

\$1,000 - \$2499

Dr. Tenley Albright
Anne & Scott Allen
Anonymous
Rose Auslander
Lynn & Sam Auxier
Diane Belliveau
Charles Bell
Chris Boeke
Frances Black
Patricia Brockway
Lisa Brooke
City Ice Pavillon
Tom Collins
Joyce Critelli
Richard Dwyer
Robert Engle
Joan Erdheim
Emily Faulkner
Eric W. Goldman
Arnold Gumowitz
Michon Halio
Ellen & Richard Halpern
Jennifer Hochglaube
William Howard
IMG
Daphne Johnson
Sharon Kerr
Ellen Laird
Joe Levine

Lyndee Lundstrom
Stephen Malcolm
Melanie Maslow
Cindy McBain
Ryan Meliker
Julie Mendik
Doris & Charles Michaels
Alicia Hall Moran
Suna Murray
Jennifer Ortega & Curtis Webster
Thomas Palamara
Ryann Pearson
Jeanette Pieper
Prospect Park Figure Skating Club
The Rinx Inc.
Susan B Ryckman Rubio
Nicole Scheiner
Kristen Schneider
Anthony Scordio
Kenneth Shelley
Clare Bowes Sheridan
Debra Snyder
Spiegel Family Foundation
Jonathan Stine
US Figure Skating
Stephen M. Strachan
Louise Vacca Dawe
Gabrielle & Steven Valiquette
Kim Milette Verde
Lola Marie Vermeulen
World Ice Arena
Ari Zakarian

PATRONS

\$500 - \$999

James Adams
John M. Almond
Margaret Bader
Claudia & John Baker
Bietak Productions
Jeffery Blonder
Lili Borach
Lucy Brennan
Donna Burns
Lisa Castelluci
Susan Ceccarelli
Keith Champagne
Stephanie Chernick Sallo
Haeran Chun
Craig Cichy
Classic Harbor Line
Enid Coleman
Michael Conard
Catherine Connolly
Frank D'Agostino
Glenda Dorchak
Sonya Dunfield
Kelsy Eagan
Kristy Eagan

Julienne Fareri
Joan Fallon
Gaye Fowler
Linda Haack
Marni Halasa
Scott Hamilton
Su & Edward Han
Wendy Hilliard
Taffy Holliday
Christine Rigby Hutton
Alicia Jackson
Tamara Jacobson
Dawn Wagner Johnson
Lucinda & Charles Landreth
Emery Leger
Glenn Leitch
Terri Levine
Keith Lichtman
James Loughran
Marianne Lynn
Charles Kerner
Nancy Kerrigan & Jerry Solomon
John McManus
Susan Mendelson
Marylyn Meyerson
Kenny Moir
Eve Mor
Suna Murray
Lisa Navarro
Netter Foundation
Sofia Nikitchuk
Charls Daren Pasion
Shawn Pattison
Lynn & Charles Poekel
Polyglide
PS Star Games
Ronald Rosee
Robyn Roth-Moise
Jane Dresner Sadaka
Diane Glynn Samuels
Elin Gardiner Schran
Cathryn Schwab
Richard Schwartz
Coco Shean
Deborah Shulman
Jerry Solomon
Masako Sparks
Lynn Stefanelli
George Tsao
Fred Wasserman
Alan Weinstein
Rosemarie & John Wertschek
Anthony West
Joseph William
Joan Wilson
Sarah Windle

SPONSORS

\$250 - \$499

Virginia & Stephen Abrams

Diane Agle
 Maryellen Allegretti
 Judith Anderson
 Kathy Angele
 Aina Arro
 Lois Baskin
 Denise Beaumont
 Bunny & Bill Beekman
 Neeraj Bewtra
 Sandra Bezic
 Abraham Bleiberg
 Arlyne Blitz
 Sharoni Boaz
 Robin Blauer
 Jill Braufman
 Gretchen Brooks
 Peter Brown
 Robert Browne
 Alida Bussi
 Slavka Kohout Button
 Melinda Camp
 Mike Carson
 Hillary Caston
 Catherine Chalmers
 Angela Chiang
 Jennifer Chu
 Susan Clark
 Jamie Comstock
 Howard Cortez
 Lisa & Nicholas deSeve
 Mary & Ron DiPrinzio
 Tanya Douglas
 Helen Emanuel
 Peter Eurich
 Iris Fodor
 Ivy Fox
 Audrey Gillespie
 Yesenia Gilroy
 Elizabeth Goldfeder
 Amy Goodfriend
 Jason Graetz
 Wendy Grunseich
 Jennifer Gruver
 Tira Harpaz
 Tom Harrison
 Mary E. Hauck
 Doug Haw
 Elizabeth Houlding
 Mary Hughes
 Helen Hyun-Bowlin
 Ice House
 Joyce Isabelle
 J&D Galaxy Sports
 Irina Kasha
 Terri Katz
 Francine Katzman
 Susan Kittenplan
 Slavka Kohout Button
 Evelyn Kramer
 Jill Lambrecht
 Donna Lasser

Ruth Legon
 Jamie Lewis
 Nancy Leamy
 Diane Leverrier
 Valerie Levine
 Kathleen Malone
 Irene Maniye
 Chika Maruta
 Craig Maurizi
 Elizabeth Mayer
 Laura McCormally
 Jeff Meyer
 Lea Anne Miller
 Maria Morningstar
 Margaret & Willard Nelson
 Carl Olsson
 Gabrielle Ortiz
 Rosanne Percivalle
 Jillian Perry Lynn
 & Charles Poekel
 Jane Raocson
 Lawrence Rosen
 Nancy Quaife
 Jeri Quinn
 Bernard Rattray
 Robert Read
 Bonni Retzkin
 Elizabeth Haley Rockwell
 Linda Rothschild
 Kassandra Hazard
 Mia Romanik
 Lynn Rutherford
 Kelly Sacks
 James Schilling
 Rhea Schwartz
 Scott Schwartz
 Azadeh Shladovsky
 Toni Eder Slotkin
 Springdale FSC
 Mark Stanford
 JoJo Starbuck
 James & Alberta Stith
 Marguerite Strauss
 Roland Suckale
 Anthony Tantillo
 William Taubenfeld
 Katherine Tekworth-Porter
 Brent Trepel
 Tracy Watts
 Laurence Weber
 Randy Wender
 Wendy K. Grunseich
 Project Management
 Westside Skate & Stick
 Sharidan Williams-Sotelo
 Doug & Betsy Wilson
 Siting Yang
ASSOCIATES
\$249 & under
 Jeremy Abbott

Stephen Adler
 Kathy Alecia
 Elisa Angeli
 Inez Aspinvall
 Janice Bayer
 Hazel Bernard
 Jules Birnbaum
 Judy Blumberg
 Portia Bock
 Brent Bommembre
 Diane Brook Brown
 Florence Brownridge
 Maurio Bruni
 Ronald Bunker
 Barbara Camp
 Linnea Capps
 Jennifer Williams Carvey
 Eve Chalom
 Molly Church
 Quin Ciuffetelli
 Irene Colton
 Janet & Leonard Connolly
 Robert Cowhey
 Jane Curtiss
 Roderick Cushman
 Verena Cushman
 Joel Dear
 Bettina Dill
 Dede Disbrow
 William Dority
 Cara Erdheim Kilgallen
 Miriam & Thomas Farmakis
 Stacey & Andrew Feller
 Ivy Fox
 Nancy Gannon
 Howard Garner
 Jennifer George
 Virginia Glover
 Johanna Goldfried
 Limor Goren
 Dennis Grimaldi
 John Grimes
 Linda Gruver
 Line Haddad
 Rae Han
 Gloria Heidengren
 Florentine Houdinière
 Jonathon Hunt
 Kay Kouris
 Randall Lane
 Rikki Kane Larimer
 Margaret Streeter Lauck
 David Ling
 Carole March
 Gian Matteo Lo Faro
 Monique Martens
 Douglas Mattis
 JoAnna Mendl Shaw
 & Joe Lertola
 Jennifer Miller
 Virginia Modest

Joyce Mola
 Debra Mueller
 Rachel Nash
 Kim Navarro
 Nina Newby
 Karen Nickerson
 Barton & Nancy Nisonson
 Maria O'Connor
 Mary Pemberton
 Joel Perlman
 Francine Port
 Erin Reed
 Susan Reiter
 Carola Romotzki
 Ronald Rosbruch
 Ira Rubinfeld
 Donald Scalea
 Nancy Sherman
 Erin & Kevin Sidwell
 Laura Sinnott
 Elena Skavinskaya
 Stephanie Spencer
 Sawyer Spielberg
 Barbara Stamm
 Tara Nicole Stamm
 Matthew Thomas
 Leslie Thorne
 Jennifer Tipton
 Tanya Tohil Farber
 Gita Vaid
 Marei Von Saher
 Sally Jeanne Watkins
 David Watkins
 Anne Webb
 Douglass Webster
 Marc Weitzman
 Jennifer Williams-Garvey
 Susan Wiley
 Sarah Xu
 Elisa & In Oung Yoon

IN KIND SUPPORT

Blue Ribbon Bakery
 City Ice Pavillon
 Classic Harbor Line
 Gabrielle Ortiz
 Lefrak Center at Lakeside
 Mac Cosmetics
 Paradigm
 Patina Restaurant Group
 Polyglide
 Riverbank State Park
 Scott Schwartz Design
 Sheer Print Solutions
 Sky Rink, Chelsea Piers

**And all of our
 generous patrons**
 As of May 11, 2018

Thank you ITNY for inspiring us!

You are an incredible group of
passionate and talented artists!

Marlo Poras and Jocelyn Glatzer



The Skaters' Fund

Founded by Coach Charles Fetter in 1998, The Skaters Fund assists all coaches and performing skaters who need financial assistance due to sickness, disability or age.

Since its inception, The Skaters Fund has awarded over \$130,000 in assistance to over 50 recipients.

Charles Fetter passed in August of 2014 following a 12-year battle with cancer. Among his final wishes was that the Skaters Fund become a part of the PS Foundation and continue to provide assistance to skaters in need.

Please consider donating today: www.skatepsa.com/psa/psfoundation.html

The PS Foundation is tax exempt under Section 501(c)(3) of the Internal Revenue Code and donations are deductible to the full extent of the law.

serpentine loop

poems by Elee Kraljii Gardiner

ABSURD FIGURES

There is a club to join and I want in. It's a special group
and initiation is a rigamarole but they keep out
the miscellany—the one-footed beaks, the hooks and pig-ears,
the loops. I am reasonably sure that's not me. I work
the room, not bent at the hips but with my knees swinging fiercely.
I ignore the judges and their wolf whistles, avoid assistance,
however kindly offered. I let my arms hang down—
hands must never fly above hips—only poets do that.
I swing like I own the joint; I take up mental space.
That's what good girls do. Judges know confidence
is thinnest when the toe is turned inward as far as possible
so I get into first position. I tend to pull up short and worry
about feelings but tonight I will overreach. I don't want to be
an amateur forever. Entering this echelon, I won't carry the
unemployed leg in front. A lot of it is luck:
an upright carriage may be silk-lined or it may be a red
wheelbarrow. So much depends upon a look
cast over the wrong shoulder. I've weathered a succession of
destroyals, now it's time to find an edge. Don't blow it, I coach
myself, this is your chance. All members must take a turn
at the door. I tilt my head accordingly so I can
keep an eye on the line as I progress. Am I in? Did I make it?
It's like being in love—they say I'll just know..

*"Kraljii Gardiner's poetry bowled me over with it breadth of emotion and vision.
Her writing has the movement of someone who understands skating"*

Dick Button,
author, commentator and two-time Olympic Champion

*Ice
Theatre
of
New York*

CELEBRATING THE JOY
OF DANCING ON ICE



**SUPPORT
ICE THEATRE
OF NEW YORK**

**Get your very own
Ice Theatre merchandise
and DVD's of past
performances today!**

Shop online at icetheatre.org

SPECIAL ACKNOWLEDGMENTS

to these individuals and others whom we might have missed

The Entire Sky Rink Staff including:

Jim Bugenhagen, General Manager • Jessica Huot, Exec. Dir. of Figure Skating
Patricia Pierre, Special Events Manager • Neal Walsh, Exec. Dir of Maint & Operations
Hector Vega, Director of Maintenance • Sky Rink Maintenance Crew

Graphic Design, Scott H. Schwartz

Merchandise, Imagine It Embroidery

Music Editing, Phil Lee

Printing, Meditz Marketing

Sound Engineer, Howard Kaufman

Videography, Paradigm Productions

Thanks to all our Ice Theatre volunteers and Brigitte Altenhaus, BDDW,
Betty Wasserman Interiors, Blue Ribbon Bakery, Classic Harbor Lines,
Jennifer George, Daisy Gogel, De Le Cuona, Lynn Leff, Gabrielle Ortiz,
Margarita Sears, Tracy Watts Hats, Robyn Wise and anyone we might have missed.

As of 5/14/18

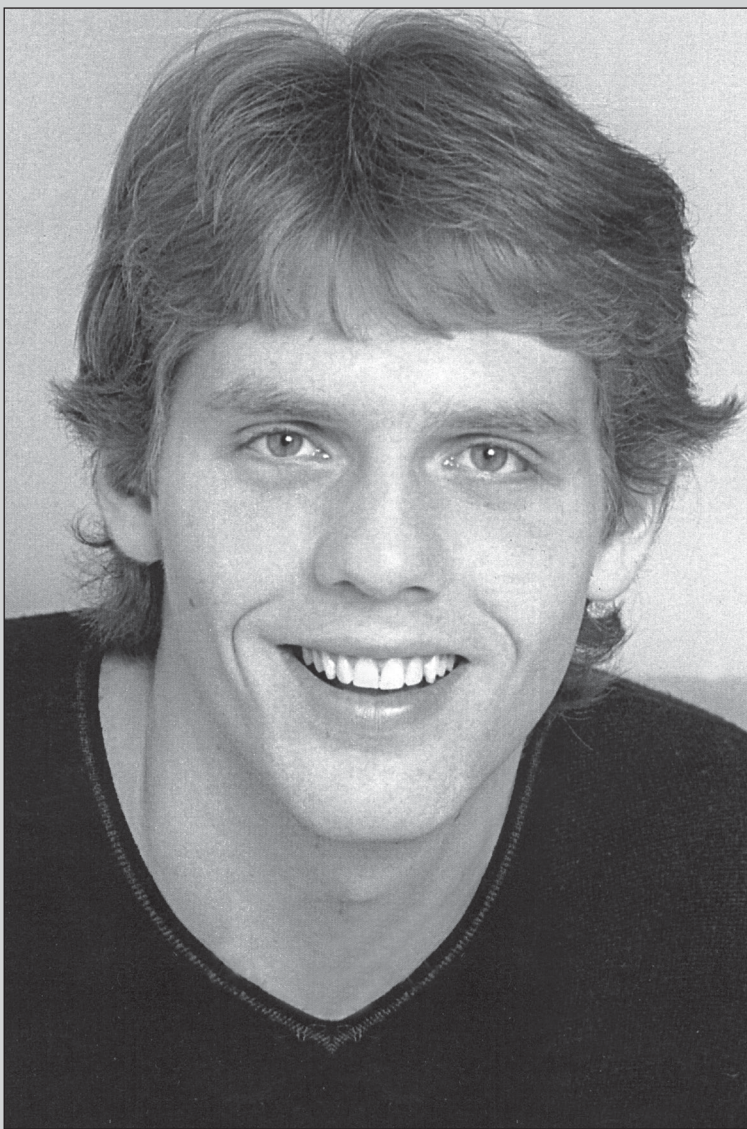


Ice Theatre of New York is supported, in part, by public funds from the New York City Department of Cultural Affairs, in partnership with the City Council, and NYC Council Member Mark Levine.



This performance is made possible by the New York State Council on the Arts with the support of Governor Andrew M. Cuomo and the New York State Legislature

ITNY also receives funding from Bloomberg Philanthropies, the Lisa McGraw Figure Skating Foundation, the Richard T. Button Foundation, the Victor C. and Clara C. Battin Foundation, the Will Sears Foundation, and its generous private patrons.



**IN MEMORY OF WILL SEARS
1982 - 2002**

Will Sears, 2002 US National Novice Pair Champion. Photo: Jeff Hornstein