

# ICE:DANCE<sup>2014</sup>

*Ice  
Theatre  
New York*

**CELEBRATING THE JOY  
OF DANCING ON ICE**

**OCTOBER 3**

Wenatchee, WA

**OCTOBER 11**

Santa Rosa, CA

**OCTOBER 16-18**

New York, NY

**OCTOBER 25**

Boston, MA

**OCTOBER 26**

Plymouth, NH

**ICE THEATRE BENEFIT GALA • October 17, 2014**

Honoring **Dr. Tenley Albright**

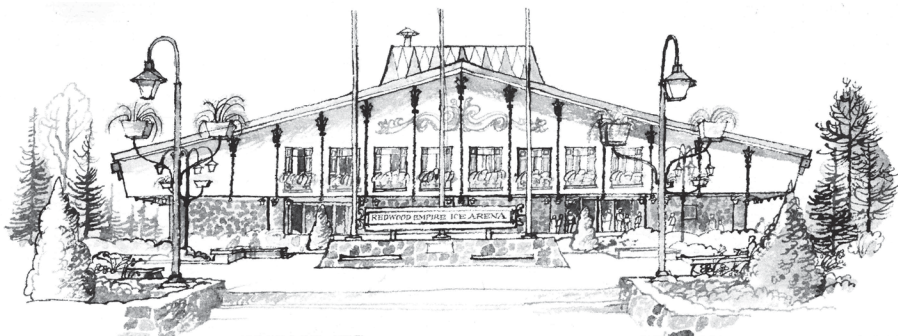
Ice Angel Award: **Sonya & Peter Dunfield**

Arts Foundation Award: **Lisa McGraw-Webster**

**Featuring Two Ice Premieres**

**This Is Forever** by Jacquelyn Buglisi

**Back Bay Shuffle** by Edward Villella



*Celebrating 45 Years  
in Sonoma County  
and a Proud Supporter  
of Ice Theatre*



**SNOOPY'S  
HOME ICE**  
**REDWOOD EMPIRE ICE ARENA**

Santa Rosa, CA ❄️ [www.snoopyshomeice.com](http://www.snoopyshomeice.com) ❄️ 707-546-7147



**THE NATION'S PREMIER  
ICE DANCE COMPANY**

## **ICE:DANCE 2014**

Wenatchee, WA • October 3, 2014  
Santa Rosa, CA • October 11, 2014  
New York, NY • October 16-18, 2014  
Boston, MA • October 25, 2014  
Plymouth, NH • October 26, 2014

### **FOUNDER/DIRECTOR**

Moira North

### **ARTISTIC DIRECTOR**

Douglas Webster

### **EXECUTIVE DIRECTOR**

Jirina Ribbens

### **ITNY PUBLIC RELATIONS**

Roberto Santiago

### **ICE THEATRE OF NEW YORK**

Brent Bommentre, Ryan Bradley, Eve Chalom, Joel Dear,  
Carly Donowick, Tyrrell Gene, Logan Giulietti-Schmitt, Jonathon Hunt,  
Lynn Kriengkrairut, Kim Navarro, Erin Reed and Natalia Zaitseva

### **LIGHTING DESIGNER**

Chenault Spence

### **PRODUCTION STAFF**

Sam Gordon

### **ADMINISTRATIVE ASSOCIATE**

Justice Lee McConnahea

# International FIGURE SKATING

*Exclusive*

Interviews with Past,  
Present and Future Stars

*Stunning*  
Photography

NEVER MISS  
AN ISSUE

Only \$19.<sup>95</sup> For a  
One-Year Subscription  
Save \$10

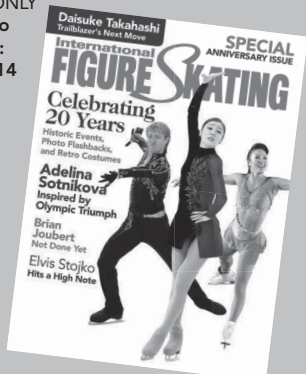
Call 1-800-437-5828 or  
go online to [ifsmagazine.com](http://ifsmagazine.com)

\*US ONLY

Promo

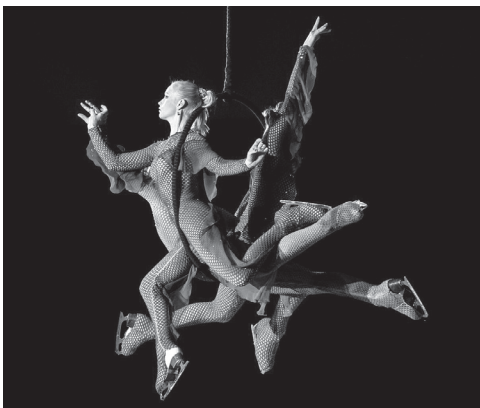
Code:

ITNY14



# Ice Theatre of New York

**CELEBRATING THE JOY  
OF DANCING ON ICE**



## ABOUT THE COMPANY

### Board of Trustees

Joan Erdheim  
Chair

Missy VanBuren  
Vice Chair

Moira North  
President

William J Candee IV  
Secretary

Mary Gaillard  
Treasurer

Lori Berlin

Jessica Betts

William J Candee III

Violet Eagan

Alicia Ernst

Susan Numeroff

Nancy Quaipe

Nanci Quesada

Markian Silecky

Frances Strauss

### Artistic Advisory Council

Elise Bernhardt

Judy Blumberg

Dick Button

Ann Carlson

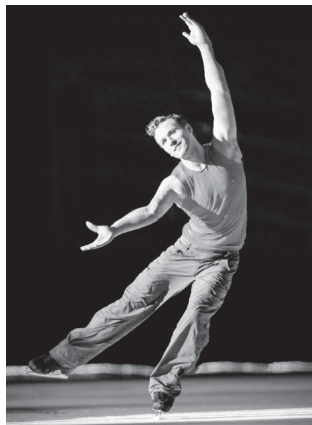
Josef Koudelka

Meredith Monk

Ken Shelley

Edward & Linda  
Villella

Founded in 1984 by Moira North, Ice Theatre of New York (ITNY) has changed the face of figure skating, by creating works that integrate the sensibilities of dance, music, and art challenging the perceptions and conventional definitions of figure skating. Its mission is to elevate dance on ice as a performance art. Through its performances in both traditional and site-specific venues, ITNY presents ice dance that opens ones eyes to seeing skating in unexpected ways. ITNY was the first ice dance company to receive dance program funding from the National Endowment for the Arts, the NYS, the New York State Council on the Arts and the New York City Department of Cultural Affairs



*"Since its establishment in 1984, the Ice Theatre of New York has combined the best of ice skating, dance and theater to create cutting edge performances that represent the very best New York's creative community has to offer."*

— Mayor Michael Bloomberg



**CELEBRATING THE JOY  
OF DANCING ON ICE**

## **ICE:DANCE 2014**

Wenatchee, WA • October 3, 2014  
Santa Rosa, CA • October 11, 2014  
New York, NY • October 16 & 18, 2014  
Boston, MA • October 25, 2014  
Plymouth, NH • October 26, 2014

(program subject to change)

### **ACT 1**

#### **FLIGHT**

Choreography by Douglas Webster

Music: Dave Grusin theme from "On Golden Pond"

**Performed by Brent Bommentre, Eve Chalom, Joel Dear, and Kim Navarro**

Commissioned by the Ahmed Family in memory of Barbara Medina

---

#### **DOODLIN'**

Choreography by Charles (Chucky) Klapow

Music by Dizzy Gillespie: Birks Works

Costumes from the Schulz collection by Jennifer Langeberg

**Performed by Ryan Bradley, Jonathon Hunt, Erin Reed, Natalia Zaitseva**

A Gang of Infamous Criminals reminisce together about their glory days of gettin' away with it all!

---

#### **THIS IS FOREVER**

Ice Premiere 2014

Choreography by Jacquelyn Buglisi

Music by David Desilva

Costumes by Alicia Jackson

**Performed by Brent Bommentre, Eve Chalom, Joel Dear, Carly Donowick, Tyrell Gene,**

**Logan Giullietti-Schmitt, Lynn Kriengkrairut, and Kim Navarro**

Commissioned for the ice by Susan and Marvin Numeroff

"This Is Forever" takes its inspiration from Mildred Cram's 1934 novella "Forever",  
a passionate tale about love at first sight that transcends life and death.

---

#### **O MIO BABBINO CARO**

Choreography by Douglas Webster

Music by Giacomo Puccini

**Performed by Erin Reed**

## **FRAGILE**

Choreography by Douglas Webster

Music “Fragile” by Sting

Costumes by Douglas Webster

**Performed by Ryan Bradley**

---

## **REVERIES**

Choreography by Edward Villella

Music by Tchaikovsky, Orchestral Suite #3 in G Major

Costumes by Karen Young

**Performed by Principals: Kim Navarro and Brent Bommentre**

**Ensemble: Ryan Bradley, Eve Chalom, Joel Dear, Carly Donowick, Tyrell Gene, Logan Giulietti-Schmitt, Jonathon Hunt, Lynn Kriengkrairut, Erin Reed, and Natalia Zaitseva**

A romantic ice ballet that explores a theme in classical dance: the artist seeking his unattainable muse.

---

## **PAUSE**

---

## **ACT 2**

### **HORIZON**

Choreography by Douglas Webster

Music by Autumn Music 1: Dan Richter

Costumes from the Schulz collection by Jennifer Langeberg

**Performed by Carly Donowick, Tyrell Gene, Lynn Kriengkrairut,  
Logan Giulietti-Schmitt, Jonathon Hunt and Natalia Zaitseva**

Created while looking at the oceans in Maine and the mountains of Sun Valley. Horizon is about space and how we move through it. In this piece Webster explores his themes of arcing space.

“She sensed the promise of speed, flow and freedom.”

This piece is dedicated to Nancy Angell Streeter and her joy of skating.

---

## **BACK BAY SHUFFLE**

Ice Premiere 2014

Choreography by Edward Villella

Music by Artie Shaw

Costumes from the Schulz collection by Jennifer Langeberg

**Performed by Brent Bommentre, Ryan Bradley, and Joel Dear**

Commissioned in memory of Will Sears

An adaptation from the ballet “Neighborhood Ballroom” is about three smokers, in tails, on the town.

---

## **UNFORGETTABLE**

Choreography by Douglas Webster

Music by Ludovic Bource

Costumes by Alicia Jackson

**Performed by Natalia Zaitseva and Jonathon Hunt**

## **DARE GREATLY**

Choreography by Douglas Webster

Music: Fix You by Coldplay arranged and played by The Vitamin String Quartet

Costumes by Katherine Patterson McDowell

**Performed by Carly Donowick, Kim Navarro, and Erin Reed**

Commissioned in memory of Will Sears

Dare Greatly Examines the Courage to Be and Trusting in the face of Sorrow and Despair.

---

## **INCLUSIONS**

Choreography by Alberto Del Saz

Music: Steppe & Passages by René Aubry

Glo Blades created by Ralph Haney

Costumes Ice Theatre of New York

**Performed by Eve Chalom, Joel Dear, Tyrrell Gene, and Logan Giulietti-Schmitt**

Commissioned by New York State Council on the Arts

Inclusions looks into the deepest molecular structures of a rock formation from its most simple combination to the most complicated refined outcome. The quality of this study deals with sharp angles, clean movement, the skaters use their bodies to manipulate the space as well as to create relations among them that suggest the qualities of coolness, purity, strength, vibrancy and beauty that become specific way of moving through space.

---

## **THE CLOCKWISE WITNESS**

Choreography by Douglas Webster

Music by Devotchka

**Performed by Brent Bommentre and Kim Navarro**

---

## **ROOTS**

Choreography by Douglas Webster

Music: Mumford and Sons, Audrae Mae, and Jason Castro: Awake My Soul,

Unclouded Day, Hallejuiah, Hold on to What You Believe

Costumes by Douglas Webster

**Performed by Brent Bommentre, Ryan Bradley, Eve Chalom, Joel Dear,**

**Carly Donowick, Tyrell Gene, Logan Giulietti-Schmitt, Jonathon Hunt,**

**Lynn Kriengkrairut, Kim Navarro, Erin Reed, and Natalia Zaitseva**

Roots is a piece in four movements about redemption, joy, and a celebration of the human spirit in an Appalachian Style Revival.

Congratulations, ITNY, on another great season!

**The Navarro Family**



# *Tania Bass Couture*

Elegance in Performance



[www.taniabass.com](http://www.taniabass.com)

677 Ninth Avenue, New York, NY 10036  
Tel. 212-246-2277



CELEBRATING THE JOY  
OF DANCING ON ICE

## 2014 ICE THEATRE BENEFIT PERFORMANCE

Honoring Dr. Tenley Albright

Ice Angel Award: Sonya & Peter Dunfield

Arts Foundation Award: Lisa McGraw-Webster

**FRIDAY, OCTOBER 17, 2014**



### HONORARY CHAIR

Dick Button

### CO-CHAIRS

Debbie Gordon and Sarah Hughes

### FOUNDER/DIRECTOR

Moira North

### ARTISTIC DIRECTOR

Douglas Webster

### EXECUTIVE DIRECTOR

Jirina Ribbens

### ITNY PUBLIC RELATIONS

Roberto Santiago

### ICE THEATRE OF NEW YORK

Brent Bommentre, Ryan Bradley, Eve Chalom, Joel Dear, Carly Donowick,  
Tyrrell Gene, Logan Giulietti-Schmitt, Jonathon Hunt, Lynn Kriengkrairut,  
Kim Navarro, Erin Reed, and Natalia Zaitseva

### LIGHTING DESIGNER

Chenault Spence

### PRODUCTION STAFF

Sam Gordon

### ADMINISTRATIVE ASSOCIATE

Justice Lee McConnahea

(Program subject to change)

### **REVERIES**

Choreography by Edward Villella

Music by Tchaikovsky, Orchestral Suite #3 in G Major

Costumes by Karen Young

**Performed by Principals: Kim Navarro and Brent Bommentre**

**Ensemble: Ryan Bradley, Eve Chalom, Joel Dear, Carly Donowick, Tyrell Gene,  
Logan Giulietti-Schmitt, Jonathon Hunt, Lynn Kriengkrairut, Erin Reed, and Natalia Zaitseva**

A romantic ice ballet that explores a theme in classical dance: the artist seeking his unattainable muse.

---

### **O MIO BABBITO CARO**

Choreography by Douglas Webster

Music by Giacomo Puccini

**Performed by Erin Reed**

---

### **FRAGILE**

Choreography by Douglas Webster

Music “Fragile” by Sting

Costumes by Douglas Webster

**Performed by Ryan Bradley**

---

### **THIS IS FOREVER**

*Ice Premiere 2014*

Choreography by Jacquelyn Buglisi

Music by David Desilva

Costumes by Alicia Jackson

**Performed by Brent Bommentre, Eve Chalom, Joel Dear, Carly Donowick, Tyrell Gene,  
Logan Giulietti-Schmitt, Lynn Kriengkrairut, and Kim Navarro**

Commissioned for the ice by Susan and Marvin Numeroff

“This Is Forever” takes its inspiration from Mildred Cram’s 1934 novella “Forever”, a passionate tale about love at first sight that transcends life and death.

---

### **UNFORGETTABLE**

Choreography by Douglas Webster

Music by Ludovic Bource

Costumes by Alicia Jackson

**Performed by Natalia Zaitseva and Jonathon Hunt**

---

### **BACK BAY SHUFFLE**

*Ice Premiere 2014*

Choreography by Edward Villella

Music by Artie Shaw

Costumes from the Schulz collection by Jennifer Langeberg

**Performed by Brent Bommentre, Ryan Bradley, and Joel Dear**

Commissioned in memory of Will Sears

An adaptation from the ballet “Neighborhood Ballroom” is about three smokers, in tails, on the town.

## **GRATITUDE**

Music by Anatole Fistoular and Jaques Offenbach

**Performed by Elin Gardiner Schran**

A special tribute to my mother Tenley.

---

## **THE CLOCKWISE WITNESS**

Choreography by Douglas Webster

Music by Devotchka

**Performed by Brent Bommentre and Kim Navarro**

---

## **ROOTS**

Choreography by Douglas Webster

Music: Mumford and Sons, Audrae Mae, and Jason Castro: Awake My Soul, Unclouded Day, Hallelujah, Hold on to What You Believe

Costumes by Douglas Webster

**Performed by Brent Bommentre, Ryan Bradley, Eve Chalom, Joel Dear, Carly Donowick, Tyrell Gene, Logan Giulietti-Schmitt, Jonathon Hunt, Lynn Kriengkrairut, Kim Navarro, Erin Reed, and Natalia Zaitseva**

Roots is a piece in four movements about redemption, joy, and a celebration of the human spirit in an Appalachian Style Revival.

---

## **ABOUT THE EXECUTIVE STAFF**

**MOIRA NORTH** (Founder/Director) Named one of the 25 Most Influential Names in Figure Skating by International Figure Skating Magazine, Moira North has been a driving force in the development of figure skating as a performing art. Since founding Ice Theatre of New York in 1984, she has commissioned renowned dance choreographers to make new works for the company while nurturing and developing choreographers from the world of ice. She has also been a catalyst in the development of other artistic ice dance companies in both Canada and the United States. Moira and partner Patrick Dean skated Ice Theatre of New York's first work, a collaboration with Belgian dance choreographer Marc Bogaerts, which won them first place in the Free Dance at the Professional Championships in Jaca, Spain. In her subsequent work as Ice Theatre of New York Director, Moira has continued to integrate contemporary dance into the repertory of ice choreography.

**JIRINA RIBBENS** (Executive Director) joined the ITNY staff in December 2004, after serving on the board since the founding of the company. Over the past 9 years Jirina has overseen ITNY's growth, such as the doubling of ITNY's operations budget, the expansion of its outreach programming for public school children, and ITNY's entry into new media, including a collaboration with Improv Everywhere, which received over 3.2 million views on You Tube. Prior to her work with ITNY Jirina worked in a variety of positions in the entertainment and sports industries. During her time at Candid Productions she produced and managed events with two-time Olympic Champion Dick Button. She also worked as an Olympic sports consultant and producer for the networks at nine Olympic Games. In 2002 she received a Sports Emmy for Outstanding Live Sports Special, as Associate Producer for NBC for the Salt Lake City Olympic Winter Games.

**DOUGLAS WEBSTER** (Artistic Director) Over the past 20 years, Douglas Webster has created a large body of repertory works for Ice Theatre of New York that includes *Roots*, *Unforgettable*, *Departures*, *Dare Greatly*, *Transitions*, and *Appalachia Waltz* (in collaboration with modern dance choreographer Joanna Mendl Shaw). Douglas has also set many works for the ice by notable dance choreographers; most recently, “*Reveries*” with Edward Villella, as well as — Charles (Chucky) Klapow, Donlin Forman, Elisa Monte, David Dorfman, David Parsons, Lar Lubovitch, and Ann Carlson. In addition to his work with Ice Theatre, Douglas has worked with all the major skating companies in the world, including *Disney on Ice* (10 shows, including *High School Musical*); *Holiday on Ice* (3 shows); *Stars On Ice* (2); and *The Sun Valley Ice Show* (3). He has also choreographed many television shows, including ITNY’s participation in *Winter Solstice on Ice*; *Skating with the Stars* for ABC TV; and *Sterren Dansen op Het IJs* in The Netherlands. He helped create, choreograph, and direct many park shows, including Ice Theatre’s *Dollywood Christmas on Ice* production for the Dollywood Theme Park in Tennessee; and shows for the Autostadt Park in Germany, including “*The Wizard of Oz!*” Along with his work on major productions and industrial events, Douglas has worked with many celebrity skaters, including most recently National Champion Ryan Bradley, Olympic Champion Sarah Hughes and Olympic Silver Medalist Sasha Cohen. Douglas serves on the board of the Young Artists Showcase and is on the staff of “*Grassroots to Champions*.” For the past two years Douglas has served as the Artistic Director of ITNY and he continues to be inspired by all the facets of the company.

---

## ABOUT THE CHOREOGRAPHERS

**JACQULYN BUGLISI** (Choreographer) In her four decade long career, Buglisi has made an indelible impact on the field of dance. Renowned for highly visual, imagistic dances that use literature, history and heroic archetypes as a primary source, Buglisi’s ballets are sweeping, passionate and always rooted in a strong physical technique. She is a prolific choreographer creating more than 100 ballets for Buglisi Dance Theatre and commissioned worldwide including *Ninfee* for the Richmond Ballet; her full-length *The Four Elements* for the Flamenco Festival presented in Madrid, Sadler’s Wells, London and New York’s City Center; *Ananda Shankar Performing Arts Company*, India; the *Shanghai Song and Dance Ensemble*, China; the *Martha Graham Dance Company*, which performed Buglisi’s *Sospiri* at NY City Center in 1989; *North Carolina Dance Theatre*, *Joyce Trisler Danscompany*, the *Teatro Danza Contemporanea di Roma* for which she was a co-founder in 1969; *American Repertory Ballet*; *Alvin Ailey American Dance Theater*; and *Ice Theatre of New York*. Her “bewilderingly beautiful” ballet *Threshold* had its Italian premiere in Milan with *Carla Fracci’s Italian Ballet Company* at the *Teatro Nuovo* and at the *Brooklyn Academy of Music, Opera House*. Buglisi, with Foreman, premiered their full-length ballet *Runes of the Heart* at Lincoln Center in 1994, followed by invitations to the Kennedy Center, The Joyce Theater, and Jacob’s Pillow Dance Festival. In 2001, she created *Requiem* to the soaring music of Gabriel Fauré, a transcending experience and amplification of the human spirit. Anna Kisselgoff raves in *The New York Times* of the ballet’s powerful images, stunning...extravagant and beautiful. Breaking new ground, Buglisi collaborated with Venezuela’s leading environmental painter/ filmmaker Jacobo Borges to create her trilogy *Blue Cathedral*, *Rain*, and *Sand*. She has collaborated with composers Tan Dun, Glen Velez, Jennifer Higdon, Daniel Bernard Roumain (DBR), Libby Larsen, Daniel Brewbaker, Reza Vali; Andy Teirstein; cellist, Maya Beiser; Flamenco Guitarist, Gerardo Nunez, the Cassatt String Quartet, the Syracuse University Symphony Orchestra and Singers; lighting designers Clifton Taylor

and Jack Mehler; mannequin maker Ralph Pucci; and Italian artist Rossella Vasta on the Table of Silence Project 9/11, a site-specific ritual for peace and tolerance performed at Lincoln Center by 158 dancers and nine musicians, and seen via live stream across the U.S. in 45 states and worldwide in 82 countries.

**EDWARD VILLELLA** (Choreographer) Edward Villella has been recognized as the greatest male ballet dancer ever produced in America. A star at the New York City Ballet, he has received nearly every important honor given to artists in the United States. He showed the world that a tough brash kid out of Maritime College could turn into a major artist, and in doing so, changed the way men danced in America as well as the way male dancers were perceived. He has lectured all over the world. Mr. Villella has received nearly every important honor given to artists in the United States. He was appointed by President Johnson to the Presidents National Council of the Arts. In 1997 he was the recipient of the Kennedy Center Honors and was also awarded the National Medal of Arts by President Clinton. In 1999 The Dance Heritage Coalition named him as one of the first 100 of America's Irreplaceable Dance Treasures and in 2009 he was awarded a fellowship to the Academy of Arts and Sciences. Mr. Villella has honorary doctor of fine arts degrees from Fordham University, The Boston Conservatory of Music, Long Island University, the College of Charleston, Allegheny College, Skidmore College, Florida Atlantic University, Sienna College, St Thomas College and Florida State University. He was awarded the Doctor of Humane Letters from the University of North Carolina. Mr. Villella was the first American male dancer to perform with the Royal Danish Ballet, and the only American ever to be asked to dance an encore at the Bolshoi Theater in Moscow. He danced for President Kennedy's inauguration and for Presidents Johnson, Nixon and Ford. He was producer/director for the PBS series "Dance in America" for one and a-half years, and in 1975 won an Emmy Award for his CBS television production of "Harlequinade." He currently serves on the Board of Trustees of the School of American Ballet. In 1998, the University of Pittsburgh Press reissued Villella's 1992 autobiography, *Prodigal Son: Dancing for Balanchine in a World of Pain and Magic*, written with Larry Kaplan. In 1986 Edward Villella founded the Miami City Ballet, which garnered international acclaim. He was also the Faculty Chair for the Miami City Ballet School. He left in September 2012 and now resides in New York. "Back Bay Shuffle" is the second piece he has created for Ice Theatre of New York.

**CHARLES "CHUCKY" KLAPOW** (Choreographer) is an Emmy award-winning choreographer of Disney's "High School Musical". For over two decades, Chucky has performed and choreographed for many entertainers in television, film and stage productions all over the world. He just got back from London after spending much of 2013 as choreographer for The Rolling Stones 50 & Counting tour. Born in 1980, Chucky began his dancing career age 12, dancing for Patti LaBelle, Celine Dion, Paula Abdul, Salt-N-Pepa, Melissa Etheridge, and others in an all-star concert. By the time he was 15, Charles was an assistant to choreographer and mentor Marguerite Dericks. He assisted Marguerite and danced in *Austin Powers: International Man Of Mystery* (1997), *3rd Rock from the Sun*, *Fame L.A.*, among others. Charles created a dance company with choreography partner Wade Robson in the mid-1990s called L.A. Images. Chucky was brought on board by Kenny Ortega (original "Dirty Dancing" choreographer) to help choreograph "High School Musical" in 2006. Klapow also worked with Ortega and Bonnie Story as a choreographer for the film's sequels, "High School Musical 2" (which earned Chucky his second Emmy award nomination) and "High School Musical 3: Senior Year." He can be seen in all of the High School Musical movies as a

dancer as well. Klapow was one of eleven dancers selected by Michael Jackson for his “This Is It” concert tour which was planned to take place at The O2 Arena in London as a 50-show run. On July 7, 2009, after months of rehearsing with Jackson, Chucky took part in his memorial service held at the Staples Center in Los Angeles. Chucky spent the Summer of 2010 as a TV reality show judge on “Don’t Stop Believing”, the UK’s search for the next all-singing, all-dancing group which aired on Channel Five. He has also choreographed for ABC’s “Skating With The Stars” and FOX’s “So You Think You Can Dance”. In November of 2011, Chucky served as choreographer/movement coach for the incomparable Mick Jagger on the Will.I.Am music video “T.H.E. (The Hardest Ever)” featuring Jennifer Lopez and Mick Jagger. Chucky spent much of 2012 in Australia where he was a judge on “Young Talent Time”.

**ALBERTO DEL SAZ** (Choreographer) Alberto del Saz is the Co-Artistic Director of the Murray Louis and Nikolais Dance Company, the Director of The Nikolais/Louis Foundation for Dance as well as an Assistant to Mr. Louis. His focus is to preserve the Nikolais/Louis technique, repertory and legacy through teaching and directing. Mr. Del Saz work has been funded by NYSCA in collaboration with Ice Theatre of New York. He has choreographed for World bronze medalist figure skater Nicole Bobek and Olympic bronze medalist and World Professional Champion Philippe Candeloro. His skating work has appeared on Ice-Wars, Grand Slam and the Professional World Championships televised on CBS, FOX and ABC networks, as well as the official opening of the Rockefeller Center sponsored by Champions on Ice.





---

## ABOUT THE COMPANY

**BRENT BOMMENTRE** Hailing from Chestnut Hill, Pennsylvania, Brent Bommentre is an American ice dancer. With partner Kim Navarro, he is the 2008 and 2009 U.S. bronze medalist and 2008 Four Continents bronze medalist. As professional skaters Brent and her have performed with Holiday On Ice, Broadway On Ice, Sun Valley On Ice and most recently in the 2014 Olympic Team Tour of Stars On Ice. In addition to skating for two years as a principal with Holiday on Ice, he has appeared in an episode on Glee, and recently as part of the group 'Aerial Ice' on America's Got Talent, and has performed for the first time with 'Stars on Ice.' Brent is excited to be once again skating with Ice Theatre of New York.

**RYAN BRADLEY** has been recognized as the 2011 U.S. Champion, 2007 U.S. silver medalist and three-time U.S. Collegiate Champion. Ryan is known for his crowd-pleasing programs and back flips. Born in St. Joseph, Missouri he came from a family of skaters and began skating at the age of two. Ryan studies business at the University of Colorado in Colorado Springs and volunteers for the Broadmoor Skating Club, as well as coaches at the World Ice Arena. Since his retirement from competitive skating in March 2012, Ryan can be found entertaining vacationers in skating shows aboard the Royal Caribbean Liberty of the Seas cruise ship, participating in the NBC-televised Disson Skating specials, teaching seminars, mentoring young skaters, and featuring in charity shows. Ryan recently realized a lifelong dream when he was invited to join the 'Stars on Ice' cast, and to tour the United States and Japan. This past year marked his second year touring with 'Stars on Ice.' He is currently headlining 'Sun Valley On Ice,' legendary ice shows taking place every Saturday night in Sun Valley, ID. This is Ryan's second season with Ice Theatre of New York.

**EVE CHALOM** is a two-time world competitor in Ice Dancing. After receiving degrees in English and Philosophy from the University of Michigan, she moved to New York City and performed as a modern dancer, performing for choreographers such as Carlos Orta, Heather Harrington, and Geraldine Cardiel. In addition to coaching skating, Eve performed with the Ice Theatre of New York beginning in 2002, at times, also serving as rehearsal director. In Chicago, Eve finished her master's degree in Dance/Movement Therapy, teaches skating, and is associate artistic director for the skating company Ice Semble. She also performed in American Ice Theatre's spring show. She wants to thank the Ice Theatre of New York for giving her a beautiful opportunity to bring her two loves of modern dance and ice skating together. She also wants to thank her family and friends for their support.

**JOEL DEAR** (Traverse City, MI.) began skating in elementary school when a section of the school playground flooded and froze over. He quickly fell in love with skating. Joel is a two time US National Medalist and a four-time US Figure Skating team member. In addition to skating, Joel works as a professional dancer and aerialist. He has performed in numerous professional ice skating and dance shows around the world. Most recently, He competed on America's Got Talent as a member of "Aerial Ice". Joel is happy to be part of Ice Theatre of New York's fall season. He has been a company member since 2008.



# *Congratulations*

## ICE THEATRE OF NEW YORK'S ICE:DANCE 2014 !!

**Linda Illsley , PMA, ACE cpt**  
**Pilates Personal Training Studio**  
Working with Skaters and Coaches  
for Better Sports Performance!  
[Lindails@Comcast.net](mailto:Lindails@Comcast.net)  
**(707) 328-1647**

Spring 2015 Classes and Workshops forming now

**CARLY DONOWICK** Born in Buffalo, NY, Carly began playing hockey at the age of four. Soon after, she realized that figure skating was her real passion and began to take skating lessons. At the young age of 11 she left home and moved to Delaware and then on to California to pursue her dream of skating on the U.S. National Team. After two years representing the U.S. internationally in ice dance, Carly finished skating competitively and returned home to Buffalo, NY to spend time with her family. Once she graduated from high school she decided to turn professional. Since 2006, she has performed in over 35 countries around the world. Carly is pursuing a degree from Buffalo State in fashion design and one day hopes to design wedding dresses and work as a figure skating choreographer. This is Carly's second season with Ice Theatre of New York.

**TYRRELL GENE** started dancing at the age of three in his hometown of Wenatchee, Washington. Dance was a form of physical therapy for Tyrrell as he recovered from a stroke inducing paralysis on his left side. His love for dance is what led him to competitive figure skating. Trained as an ice dancer, he became a 5-time national competitor. He continued his cross training of dance and expanded into areas of jazz, ballet, modern and ballroom. Tyrrell has been with Ice Theatre of New York since 2001, performing in the 2008 and 2009 French tours.

**LOGAN GIULIETTI-SCHMITT** Born in Oak Park, Illinois, Logan began skating at the age of three and ice dancing at twelve. With his current partner, Lynn Kriengkrairut, he is the 2007 U.S. Junior Bronze Medalist, 2012 U.S. Senior National Pewter Medalist, two-time International Gold Medalist and eight time Team USA member. He recently finished his competitive career as a 2014 Four Continents team member. Logan graduated from Eastern Michigan University in 2008 with a Bachelors Degree in Geology. He was the director of the Ann Arbor Figure Skating Club Learn to Skate Program for six years and is now a professional figure skating instructor in Colorado Springs where he currently resides. This is his first year in Ice Theatre of New York and is honored to be a part of the cast.

**JONATHON HUNT** With over 20 years of experience as a professional and competitive figure skater, Jonathon Hunt has made a name for himself through his hard work and dedication to his sport. Over the years, he has developed his skills as a world-class skater, performing in several high-profile shows. A 2003 Junior World Pairs Bronze Medalist and 2004 US Nationals Senior Pairs Medalist, he was the principal performer in shows including the Rockefeller Christmas Spectacular, Whiskers Holiday Ice Spectacular, and the Ice Mystique show in Ocean Park, Hong Kong. He has also been a part of the ensemble cast of the Tribute 2 show in Atlantic City, and Fantasy on Ice, in Fukui, Japan. Jonathon has been a principal member of Ice Theatre of New York since 2012. Being a part of the US International Team from 1999-2005 has solidified him as a top coach in the field. At the University of Delaware, Jonathon apprenticed Pam Gregory, Jeff DiGregorio, Ron Ludington, and Natalia Lininichuk. Teaching at the Ice House in Hackensack, NJ, he apprenticed Artur Dmitriev. Jonathon's specialties include freestyle, pairs, pole harness, video analysis, and off-ice jump harness. He is a United States Triple Gold Medalist in singles, pairs, and moves.

**LYNN KRIENGKRAIRUT** From Bismarck, North Dakota, Lynn began skating at the age of six. With her partner Logan Giulietti-Schmitt, she is the 2007 U.S. Junior Bronze Medalist, 2012 U.S. Senior National Pewter Medalist, two-time International Gold Medalist and eight time Team USA member. She recently finished her competitive career as a 2014 Four Continents team member. Lynn graduated from the University of Michigan with a degree in Biopsychology, Cognition, and Neuroscience. She is currently applying to medical school and hoping to start in the fall of 2015. This is her first year in Ice Theatre of New York and she is thrilled to be a part of the company.

**KIM NAVARRO** first joined the Ice Theatre of New York in 1999. With partner Brent Bommentre she is a two-time U.S. Bronze Medalist in Ice Dance and two-time World Team member. As professional skaters she and Brent have performed with Holiday On Ice, Broadway On Ice, Sun Valley On Ice and most recently in the 2014 Olympic Team Tour of Stars On Ice. They appeared in an episode of the television show Glee and last summer competed with the skating act "Aerial Ice" in the quarterfinals of America's Got Talent. Kim graduated from Columbia University, cum laude, with a degree in English and minor in Dance.

**ERIN REED** Erin was a United States Junior Ladies National Medalist and Senior National Competitor from Salt Lake City, UT. She has performed as a principle skater in renowned productions around the world including Sun Valley on Ice, Willy Bietak Productions on numerous Royal Caribbean Cruise Line ships, and Autostadt, Wolfsburg Germany. She also performed in the Opening and Closing Ceremonies of the 2002 Salt Lake City Olympic Games. Erin is honored to be performing her 3rd season with the Ice Theatre of New York.

**NATALIA ZAITSEVA** competed in national (Russian) and international singles and Pairs competitions for nearly a decade, and has skated professionally for 17 years. She began skating in her native Russia at the age of three so as to skip her kindergarten's enforced afternoon nap. At 13, she was invited to a pairs' skating school in Perm, where she earned one of the last Masters of Sport of the USSR in pairs, just before the dissolution of her country in 1991. After her partner retired, she was invited to the School of Olympic reserve in Yekaterinburg, and upon graduation she moved to Moscow for two years of study of figure skating and other sports at the Moscow Academy of

Sport. In parallel to her studies, she skated with Moscow Ballet on Ice. In 1997 she joined Disney on Ice, where she started as a chorus skater, and within two years became principal skater. Her first role was Megara from the “Hercules” movie, then Snow White, Belle, Nala (the lioness from Lion King), as well as Mulan, Little Mermaid, Jasmine, and Violet as understudy roles. She worked for Disney on Ice for 14 years, which she described as “an amazing experience, a school for a lifetime.” For the past summers she has skated in ‘Sun Valley on Ice’ as an adagio pair team, in 2011 with Bert Cording, and in 2012 and 2013 with Jeremy Barrett. This is Natalia’s second season with Ice Theatre of New York.

**CHENAULT SPENCE** (Lighting Designer) is renowned throughout the world as lighting designer for opera, ballet and theatre. He has been a lighting designer for thirty years for Alvin Ailey American Dance Theatre and has received two Emmys for his work on *The Damnation of Faust* and *Un Ballo in Maschera* with Luciano Pavarotti for The Opera Company of Philadelphia. In addition to the Ice Theatre of New York, he is a resident lighting designer for Alvin Ailey American Dance Theatre, Dance Brazil, New York Baroque Dance Company, Saeko Ichinohe Dance Company and the Long Leaf Opera Company. He has also done work for Lyon Opera Ballet, Dance Theatre of Harlem, Washington Ballet, Erick Hawkins, Jose Limon, Bat-Dor Dance Company of Israel and The National Ballet of Iran, amongst other theatre and ballet companies throughout the world.

## THE CAST



Brent Bommentre



Ryan Bradley



Eve Chalom



Joel Dear



Carly Donowick



Tyrrell Gene



Logan Giulietti-Schmitt



Jonathon Hunt



Lynn Kriengkrairut



Kim Navarro



Erin Reed



Natalia Zaitseva

# SPECIAL ACKNOWLEDGMENTS

to these individuals and others whom we might have missed



## **BOSTON, MA**

Dr. Joseph Kasputys

Jimmy Morgan

Colleen O'Brien

Tammy Perlman

Doug Zeghibe

The Skating Club of Boston

Staff & Volunteers

## **NEW YORK, NY**

The Entire Sky Rink Staff including:

Jim Bugenhagen, General Manager

Jessica Huot, Exec. Dir. of Figure Skating

Patricia Pierre, Special Events Manager

Neil Walsh, Exec. Dir of Maint & Operations

Hector Vega, Director of Maintenance

Sky Rink Maintenance Crew

## **SANTA ROSA, CA**

The Schulz Family

The Management and staff

at Snoopy's Home Ice

The Charles M. Schulz Museum

and Research Center

Santa Rosa Figure Skating Club

San Francisco Ice Theatre

Melissa Leonard and Stephanie Ewing

Paige C. Scott and Louis Vachon

Don Ajello

Skip and Brenda Berg

Diana Dumbadse

Mary Dilillo

Justin Higgs

Linda Illsley

John and Lisa Navarro

Bob and Jacqueline Scheibel

Evie Welsh

Fred Wetzal

Dehlinger Winery

Kobler Estate Winery

Sonoma County Airport Express

All our Ice Theatre volunteers

Judy Blumberg

Pam Farr and Scott Irvine

from Sun Valley Resorts

Charles Kerner

Accountant

Scott H. Schwartz

Graphic Design

The Schulz family Costume Collection

by Jennifer Langeberg

Directed by Karen Kresge

## **MERCHANDISE PROVIDED BY**

Imagine It Embroidery

## **MUSIC EDITING BY**

Phil Lee, Cityvox

## **PHOTO CREDITS**

Amy Krut (Cover)

Keri Pickett

Darial Sneed

## **FUNDERS**

Gertrude Vanderbilt Endowment

Will Sears Fund

Bloomberg Philanthropies

Dance/NYC

Lisa McGraw Figure Skating Foundation

The Pioneer Fund

and our generous private patrons



Ice Theatre is supported, in part, by public funds from the NYC Department of Cultural Affairs, in partnership with the City Council.

# CONGRATULATIONS TENLEY ALBRIGHT

2014 Ice Theatre of New York Honoree

Age 2.5



1956



## SO MANY GREAT MEMORIES

**A champion right from the start.**

### ALL THE ALBRIGHTS

NILE • LEE

MARTINA • TARA • LARS



## OUR FAMILY OF SUPPORT

### Gertrude Vanderbilt Endowment

Designated to support the development of choreography for Dance on Ice.

### The Will Sears Fund

In memory of Will Sears.

Able Freight Services  
Aerial Ice  
Stephen Adler  
Diane Agle  
Ahmed Family  
AIG Matching Grants Program  
Air Force Mechanical  
Leslie & George Akst  
Emily Alacar  
Dr. Nile Albright  
Dr. Tenley Albright  
Scott Ethan Allen  
Karen Alstadt  
Anonymous  
Arme Gems & Jewels Ltd.  
Rose Auslander  
Pamela Averick  
Karen and Michael Azzopardi  
Josh Babb  
Claudia Baker  
Denise Beaumont  
Bunny & Bill Beekman  
John Belle  
Diane & Stan Belliveau  
Rebecca Budig & Michael Benson  
Lorraine & Carswell Berlin  
Sandra Bezic  
Bietak Productions  
Roy Blakey  
Robin Blauer  
Bloomberg Philanthropies  
Judy Blumberg  
Chris Boeke  
Brent Bommentre  
Bone Levine Architects  
Sandy Bosley

Lucia Bowes Hall  
Barbara Bowly  
Dick Button  
Breibbart Family  
Lucy Joyce Brennan  
Naomi Brockwell  
Brooklyn Ice  
Neal Jay Brower  
George and Mary Jo Budig  
Ronald Bunker  
Barbara & William Candee III  
William Candee IV  
Stephen Canter  
Nathalie and James Carey  
Susan Ceccarelli  
Charles Cecil  
Cedar Grove Fund of the Princeton Area  
Anne Cesario  
Catherine Chalmers  
Keith Champagne  
Chelsea Piers Management  
The Clara & Victor Battin Foundation  
Craig Cichy  
City Ice Pavilion  
Classic Harbor Line  
Tom Collins  
Janet Connolly  
Anita Conrad  
Mary Critchlow  
Robin Currie  
Jane Curtiss  
Susan and John Daliere  
Louise Dawe  
Nicholas De Seve

Debevoise & Plimpton  
Heather Decastro  
Susan & Victor Del Rio  
Donna DeVarona  
Dawn Diaz  
Betsy Difelice  
Bettina Dill  
Stephen Disson  
Janet & Sherwyn Drobner  
Barrie & William Drummy Jr.  
Ana Duarte  
Michele Kohler & Gregory Dunfield  
Yvonne & Roger Dunfield  
Sonya Dunfield  
Richard Dwyer  
Mary Eagan  
Violet and Christopher Eagan  
Christina Elwell  
Marianne & Robert Engle  
Epic Company  
Stephen G. Epstein  
Cara Erdheim  
Joan and Marty Erdheim  
Alicia Ernst  
Estate of Marian Naumburg  
Peter Eurich  
Joan Fallon  
Famiglia Pizza  
Vanessa Fata  
Emily Faulkner  
June Feldman  
Sandy & Charles Fetter  
Mary & Gregory Ferguson  
Kathlin Feuerstein  
Cindy Finkelman  
Judith and Richard Firtel  
Linda Fratianne  
Berna French  
Mary Gaillard  
Christopher Gale  
Florence Gallez  
LillaRhys Gardiner  
Randy Gardner  
The GE Foundation  
Tanis Gehrke  
Susie Gharib  
Dennis Gibbs  
Susan Glendening  
Virginia Glover

Diane Glynn Samuelsen  
Debbie & Robert Gordon  
Granite Club  
Lara & Grant Gund  
Arnold Gumowitz  
HC Wainwright & Co  
Marni Halasa  
Ellen & Richard Halpern  
Tracie & Scott Hamilton  
Jane Hancock  
Tira Harpaz  
Susan T Harris  
Tobey Hartman  
Betsy Hauck  
Jeff Herbst  
Margaret Holen  
Barbara D. Holland  
Taffy Holliday Pergament  
Austine Howard  
Jill Howell  
Amy and John Hughes  
Myrna Beth Hurwitz  
Molly Iannarelli  
Ice House  
Ice Rink Events, Inc.  
Ice Skating Institute  
Shane Inman  
Roland Jarquio  
Maria Jelinek  
Carol Heiss & Hayes Jenkins  
Daphne Johnson  
Joan Kane Josephson  
Kitty Justin  
Justin family Foundation  
Jayanti Kanal  
Karlirtz and Company  
Marilyn & Joseph Kasputys  
Terri Katz  
Francine Katzman  
Katzman Ernst Family Foundation  
Charles Kerner  
Dr. Nadine Ahmed & John Kerr  
Pat Kiernan  
Kips Bay Ice Rink  
Susan Kittenplan  
Janice Kofta  
Elee Kraljii Gardiner  
Ron Kraut  
Margaret Streeter Lauck  
Ruth Legon

Shannon Lenihan  
Terri Levine  
Valery Levine  
Barbara & Melvin Levy  
Joseph Levy  
Keith Lichtman  
Lisa McGraw Figure  
Skating Foundation  
Vicky London  
Cara Lown  
Craig Lussi  
Sergei Lussi  
Barb MacDonald  
Alexandra Maier  
Peter Martell  
Anthony Martin  
Massachusetts General  
Hospital  
May McCann  
Kathleen McGowen  
Rachel McIntosh  
Susan McKimms  
Helen Medger  
David Mellins  
Susan Mendelson  
Rena Mendelson  
Michel Mercure  
Michael Mertaugh  
Marylyn Meyerson  
Barbara Miller  
Nicole Miller  
Maria Morningstar  
Erin Murphy  
Margaret Murphy  
Suna Murray  
Lisa Navarro  
Nazem Family  
Foundation  
Susan Neiman  
Margaret and Willard  
Nelson  
Netsle'  
Netter Foundation  
New Jersey Figure  
Skating Foundation  
Newport Ice Rink  
The Ninth State  
Movement Complex  
Nancy and Barton  
Nisonson  
Terry Norgeot  
Susan and Marvin  
Numeroff  
Maria O'Connor

N. Carl Olsson  
Marilyn Park  
Patina Restaurant Group  
Pepsico Employee Giving  
John Misha Petkevich  
The Pioneer Fund  
Albert Pope  
Francine Port  
Michael Preis  
Princeton Skating Club  
Nancy Quaife  
Nanci Quesada  
Tina Ramirez  
Bernard Ratray  
RD Management Corp  
Research! America  
Richard T. Button  
Foundation  
Paul Rindone  
Carlyn Ring  
Robert & Dale Rosen  
Charitable Foundation  
Deborah Roitberg  
Harold and Lisa  
Rosenthal  
Robin Roth-Moise  
Karen Rowland  
Susan Ryckman  
SF Foundation  
Kelly Sacks  
Diane Glynn Samuelson  
Gonzalo Sanchez  
Ann Sather  
Elin Gardiner Schran  
Marlene & Joseph  
Schwadron  
Rhea and Paul Schwartz  
Charles Scribner  
Margarita Sears  
Eileen Seigh  
Kenneth Shelley  
Clare Sheridan  
William Sheridan  
Kevin M. Sidwell  
Markian Silecky  
Connie & Angelo Silveri  
Laura Sinnott  
Skate Canada  
Skater's Edge Pro Shop  
Skating Club of Boston  
Beverly and Jackson  
Skog  
The Skyliners  
Toni Slotkin

Andrea Joyce & Harry  
Smith  
Ruth Smith  
Tenley Smith  
Frantil Sokoloff  
Jerry Soloman  
Erwin and Pearl Staller  
JoJo Starbuck  
Starbucks Community  
Service Program  
Jonathan Stine  
Frances Strauss  
Henry Strouss  
James Sugar  
Summit Productions, Inc.  
The Sun Valley Ballet  
School  
Clare Swanger  
Adele & Bob Sweet  
Martha Sword  
System Air  
Shirley & James  
Tallackson  
Iren Tar  
Lee Traub  
KD Taylor  
Pat & Ken Taylor  
Judith Teller-Kaye  
Dana Thayer  
Margaret Turner  
United Steel Foundation  
April Uram  
USFS  
Dorian Valles  
Missy Vanburen  
Gerty Verbiwski  
Desjardins  
Kim Verde  
Robin Wagner  
Evan Walden  
Vera Wang  
Lisa & Lewis Warren  
Betty Wasserman  
Valerie & Donald  
Watnick  
Weber County  
Corporation  
Jennifer Ortega & Curtis  
Webster  
Alan Weinstein  
Audrey Weisiger  
Westside Skate and Stick  
Betsy & Doug Wilson  
Joan Wilson

Sarah Windle  
Toby Wolf  
Wonderland On Ice  
Kelly Wong  
World Ice Arena LLC  
Benjamin T. Wright  
Sarah Xu  
Jeff Young  
Ari Zakarian  
Aja Zanova

## IN KIND SUPPORT

AD+  
Artisanal Group  
Josh Babb  
Blue Ribbon Bakery  
Chelsea Piers, LP  
Chenault Spence Lighting  
Citi Pond at Bryant Park  
City Ice Pavilion  
Classic Harbor Cruises  
Debevoise and Plimpton  
Figure Skating in Harlem  
The Goldmine  
The Golf Club at Chelsea  
Piers  
Icenetwork.com  
Ice Rink Events  
ICE-WATCH  
International Figure  
Skating  
MAC Cosmetics  
The Rink at Rockefeller  
Center  
Rink Management  
Services  
Riverbank State Park  
Michael Rollins  
Scott Schwartz  
Sheer Print Solutions  
Skating Club of NY  
Sky Rink at Chelsea Piers  
Jerry Solomon, Star Games  
The Sports Center at  
Chelsea Piers  
Twin Rinks Ice Center  
USFS  
WB Wood  
Wollman Rink  
World Ice Arena

**And all of our  
generous patrons**

7/1/13-9/30/14



*Ice  
Theatre  
of  
New York*

CELEBRATING THE JOY  
OF DANCING ON ICE



**SUPPORT  
ICE THEATRE  
OF NEW YORK**

**Get your very own  
Ice Theatre merchandise  
and DVD's of past  
performances today!**

**Shop online at [icetheatre.org](http://icetheatre.org)**



# Let Freedom Ring



**GayCity** NEWS

[GAYCITYNEWS.COM](http://GAYCITYNEWS.COM)

[FRANCESCO@GAYCITYNEWS.COM](mailto:FRANCESCO@GAYCITYNEWS.COM)

646-452-2496

# INTRODUCING THE NEXT LEVEL IN SKATE SHARPENING



## PROSHARP ENDORSED BY THE SWEDISH NATIONAL TEAM

Skater's Edge Pro Shop, located at Sky Rink, features state-of-the-art skate sharpening machinery, the ProSharp and the Blademaster – the official and exclusive supplier of the American, Canadian, Russian and Swedish National teams. These devices have the ability to customize many performance aspects of the player's skates such as blade hollow and profile.

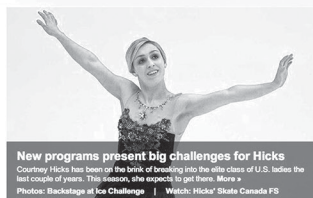
# SKATER'S EDGE



PRO SHOP

SHARPENING • FITTINGS • PROFILING • ALIGNMENTS • APPAREL • MERCHANDISE

LOCATED AT SKY RINK AT CHELSEA PIERS • PIER 62  
212.336.6123 • [chelseapiers.com/sr](http://chelseapiers.com/sr)



#### VIDEOS



#### PHOTO OF THE WEEK



After being away from the sport for several seasons, Chantelle Maxwell and Ryan Devereaux returned to the ice – together, no less – at the 2014 Lake Placid Ice Dance Championships. (Photo by Daphne Beckman) [See more photos »](#)



#### CONNECT WITH ICE NETWORK

[f](#) [t](#) [Follow](#) [Read](#)

#### FIGURE SKATING NEWS

Iliaaia Barton, Holarek end pairs partnership

## INTRODUCING THE 2014-15 ICENETWORK SEASON PASS

# ONLY \$49.99

A great way to  
experience all  
that icenetwork  
has to offer!

The 2014-15 icenetwork Season Pass gives subscribers access to more than 500 hours of premium figure skating video, including:

- ⊙ 2014 Hilton HHonors Skate America
- ⊙ 2015 regional and sectional championships
- ⊙ 2014 ISU Grand Prix Series and Grand Prix Final
- ⊙ 2015 Prudential U.S. Figure Skating Championships
- ⊙ 2015 ISU Four Continents Championships
- ⊙ 2015 ISU European Championships
- ⊙ 2015 ISU World Championships
- ⊙ 2015 ISU World Synchronized Skating Championships
- ⊙ A collection of your favorite skating shows

## icenetwork

If you are a current U.S. Figure Skating member and have not received an email with a discount code, call U.S. Figure Skating Member Services at 719.635.5200 to verify your member status and receive a discount code.

## SPECIAL OFFER FOR U.S. FIGURE SKATING MEMBERS ONLY

# \$24.99\*

*\*Offer good through October 27, 2014.*

## FREE CONTENT *No subscription required!*

- ⊙ Behind-the-scenes video
- ⊙ Photo galleries
- ⊙ Latest news
- ⊙ Event schedules and results
- ⊙ Athlete profiles
- ⊙ World Skater Rankings
- ⊙ Athlete blogs
- ⊙ Social media and forums



# THE WORLD COMES TO BOSTON

The world's greatest skaters compete for the title of world champion!



**ISU WORLD  
FIGURE SKATING  
CHAMPIONSHIPS®  
BOSTON★2016**

**worlds2016.com**

**MARCH 28 - APRIL 3, 2016**

**TD GARDEN**

