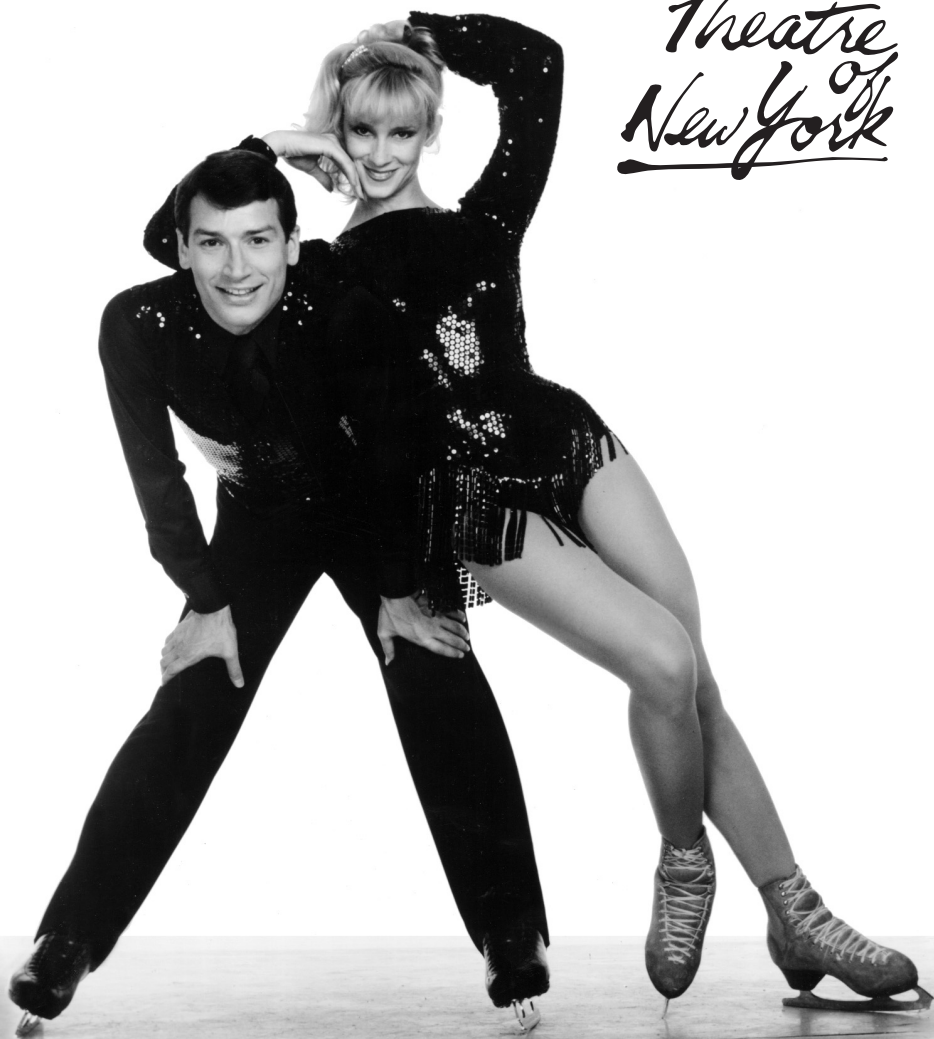


*Ice
Theatre
of
New York*

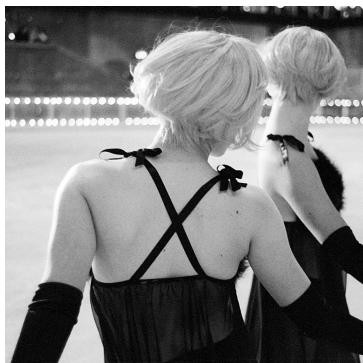
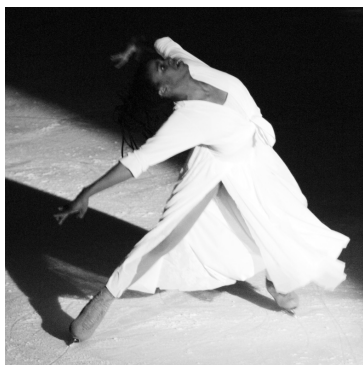


22nd Anniversary Gala | 2006
in honor of
JoJo Starbuck and Ken Shelley
October 24, 2006

Sky Rink at Chelsea Piers | Pier 61 | 23rd Street & the Hudson River



Ice Theatre of New York



Ice Theatre of New York is an extraordinary organization, which has, for more than 20 years, changed the face of figure skating by integrating the sensibilities of the contemporary dance, music and art worlds into performance skating.

Founded in 1984 by Moira North, Ice Theatre of New York is the nation's first not-for-profit ice dancing ensemble to be awarded grants as a dance company by the National Endowment for the Arts, the New York State Council on the Arts and the New York City Department of Cultural Affairs.

In addition to pioneering skating as a performing art, Ice Theatre has also initiated diverse performance programs to develop ensemble skaters, as well as educational outreach programs to teach the basics of skating and cultivate new audiences for dancing on ice.

Outreach programs include the Lunchtime Concert Series at Rockefeller Plaza and the New Works and Young Artists Series at Riverbank State Park, dedicated to presenting new works to school age children from the area, and to providing skating clinics for public school students from Harlem and Washington Heights.

And the critics have taken notice...

**Ice Theatre is onto something
and it deserves greater support!**

— Anna Kisselgoff, *The New York Times*

**One looks forward to seeing more of the
programs of Ice Theatre of New York.
They are truly challenging audiences and
choreographers to experience new vistas
coupled to traditions of excellence!**

— Bernardine Jennings, Editor-in-Chief, *Dancer's
Magazine*

**Ice Theatre takes all the tricks that make the
sport so engaging and transforms them into art.**

— Patti Hartigan, *The Boston Globe*



2006 Ice Theatre Benefit Gala

honoring
JoJo Starbuck and Ken Shelley

Tuesday, October 24, 2006 at 7pm

ARTISTIC DIRECTOR

Moira North

EXECUTIVE DIRECTOR

Jirina Ribbens

ASSOCIATE ARTISTIC DIRECTOR

Douglas Webster

BENEFIT GALA ASSOCIATE ARTISTIC DIRECTOR

David Liu

ENSEMBLE DIRECTOR

Judy Blumberg

DEVELOPMENT

Stephanie Skaff

THE ENSEMBLE

Ali Blank, Angela Chiang, Aidan Daley-Hynes, Tyrrell Gene. Line Haddad,
Marni Halasa, Helen Hyun-Bowlin, Bing Yang Liu, Suzanne McDonald, Jessica Mills,
Katya Semoukhina, David Tankersley, Alyssa Stith, Greg Wittrock

WITH

Oksana Baiul
Jessica Huot & Juha Valkama
David Liu
Robin Sudkamp and Jonathan Poitras

LIGHTING DESIGNER

Chenault Spence

PRODUCTION MANAGER

Carrie Furay

GALA SKATING PROGRAM

(program subject to change)

I'VE GOT RHYTHM

Choreography by JoJo Starbuck

Music by Ira Gershwin

Performed by David Liu

FANTASIE IMPROMPTU

Choreography by Natalia Linitchuk

Music by Frederic Chopin

Performed by Jessica Huot and Juha Valkama

2:1

Choreography by David Liu

Costumes by Katherine McDowell

Performed by Alyssa Stith, Line Haddad, and Tyrrell Gene

The relationship between what one imagines if there were two.

EGYPTIAN ICE DANCE

Choreography by Evgeny Platov

Music: Egyptian Bellydance from Buddha Bar by David Visan

Performed by Suzanne McDonald

THE MISSION

Choreography by JoJo Starbuck

Music by Ennio Moricone

Performed by David Liu

AFTER MIDNIGHT

Choreography by JoJo Starbuck and Ken Shelley
Staging by John Sheridan
Music “Humoresques” by Antonin Dvorak – Pianist Steven Masi
Costumes by William Ivey Long
Make-up by James Darrah
Performed by Ali Blank and David Tankersley

Late at night a clown doll awakens to find a beautiful ballerina doll near by.
She also awakens to his surprise. They dance and enjoy this new world.
Ultimately they exchange the greatest gift of all.

NESSUN DORMA

Music by Puccini
Choreographed and performed by Robin Sudkamp and Jonathan Poitras

SOLO

Choreography by Oksana Baiul
Music by KT Tunstall
Performed by Oksana Baiul

TANGO TANGO

Choreography by Peter Martins
Music: Tango composed by Igor Stravinsky; Jalousie composed by Jacob Gade
Costumes by Karen Young
Performed by Suzanne McDonald and David Liu

HOT CHOCOLATE

Choreography by Douglas Webster
Rehearsed by Maria O'Connor
Music soundtrack from Polar Express
Performed by Angela Chiang, Marni Halasa, Aidan Daley-Hynes, Tyrrell Gene, Helen
Hyun-Bowlin, Bing Yang Liu, Katya Semoukhina, Greg Wittrock

ABOUT THE ARTISTS

OKSANA BAIUL (Guest Artist) is originally from the Ukraine and started skating at the age of three. After years of training, she won major international competitions, including the World Championships in 1993 and shortly thereafter the 1994 Olympic Games in Lillehammer. After winning Olympic Gold, Baiul moved to the United States. She has toured extensively and starred in television specials here and abroad.

ALI BLANK Ali is a triple gold medalist and a national and internationally ranked skater in both singles and pairs. She turned pro with teachers Bill Fauver and Laura Sanders to travel the world with Disney On Ice. Her work includes Pocahontas and 75 Years of Disney Magic. Ali teaches skating at Chelsea Piers and also at the Figure Skating Club of Harlem. She earned a Bachelor of Science degree from the Fashion Institute of Technology in Fashion Merchandising Management and now is pursuing her own fashion label A BLANK EXPRESSION. Presently you can see Ali perform with her partner David in the 2006 Radio City Christmas Spectacular this winter.

JUDY BLUMBERG (Ensemble Director) has been a presence in the figure skating world for the past 25 years in a variety of roles: performer, coach, commentator, consultant, and inspirational speaker. Judy and former partner Michael Seibert are five-time US Ice Dance Champions, three-time World Bronze medallists and two-time Olympic Team Members (1980-1984). They also hold numerous United States, International and World Professional Championship titles. Being inducted into the US Figure Skating Hall of Fame in 1996 was yet another memorable moment for this duo. Judy holds a BS Degree from Hunter College, and most recently earned her accreditation as an Integrative Nutritional Consultant. Judy brings her invaluable assets to the company as Ensemble Director for the Ice Theatre of New York. In addition to her work with Ice Theatre, Judy coaches competitive ice dancers, and is currently one of only two ISU Technical Specialists for the United States in dance in the new judging system in eligible skating. Judy has served on the Board of Directors of the USFSA, and the Athlete Advisory Council of the USOC.

ANGELA CHIANG has passed her Senior Ladies test and began training and performing as an apprentice with Ice Theatre of New York during the Company's 2002 Summer Residency in Jamestown. In 2004 Angela became a full-fledged member of the Ensemble and has been performing with the Company on a regular basis, including her participation in *Dance Visions on Ice*. Angela is an NYU student in her final year of journalism.

AIDAN DALEY-HYNES is from Burtonsville, MD. She started her ensemble skating experience by performing with *The Potomac Ice Theatre*. She then trained at The Chesapeake Skating School and has earned a gold medal in Moves in the Field. She has competed in numerous *International Theatre on Ice Competitions* and earned one gold and two silver medals. She joined the company in 2002 and performed with the company in *Dance Visions on Ice*.

CARRIE DELL FURAY is delighted to return to Ice Theatre after spending the last two years at sea as Senior Production Manager for Princess Cruises. Now a full-time resident of New York, Furay has worked with Ice Theatre since 2001 on projects such as *Fashions on Ice*, *Dance Visions on Ice*, and 2004's *Gala and Home Show*. She would like to thank Moira and Jirina for their continuing dedication to this wonderful company.

TYRRELL GENE started dancing at the age of three in his hometown of Wenatchee, WA. Dancing, which was initially a form of therapy for his stroke-induced paralysis, led him into figure skating. For the past 13 years, Gene has trained as an ice dancer and was a 5-time national competitor. He has continued his cross-training with his studies and performances of jazz, ballet, modern and ballroom dancing. He has been with Ice Theatre for five years and performed in *Dance Visions on Ice* this past season.

LINE HADDAD is two-time French National Champion, one-time Israeli National Champion and represented France in international championships such as the European Championships and World Championships. She participated in the 1992 Olympic Games and was the youngest athlete in the Games that year. Professionally, she skated in Philippe Candeloro's *Beauty and the Beast* ice performances and in the French Figure Skating Tour. She received her Master of Arts in translation and linguistics in Paris, majoring in French, English and Spanish. Haddad currently resides in the United States as a figure skating instructor and choreographer. She joined the company in 2003 and last season was featured in *Dance Visions on Ice*.

MARNI HALASA a United States Figure Skating double gold medalist, originally hails from Cleveland, Ohio. But it was her move to New York City that made this lawyer/journalist achieve her aspirations as a multi-faceted

performer. Since 1996, Marni has skated with Ice Theatre of New York in various shows at Rockefeller Center, Bryant Park and the Trump Taj Mahal in Atlantic City. In addition, Marni was the Artistic Director for the Ice Angels as well as a member of the New York Ranger's Ranger City Skaters. Marni's recent projects include choreographing the opening and closing ceremonies for Stars, Stripes & Skates 2007 as well as assisting for the soon-to-be released Disney movie, *Enchanted*.

JESSICA RENEE HUOT & JUHA VALKAMA are three time Finnish National Ice Dance Champions and three time World and European competitors. They started skating together in 1998 in Newark, Delaware where they were coached by the 1980 Olympic Ice Dance Champions Natalia Linitchuk and Gennadi Karponosov. During their competitive years, Jessica and Juha skated on four different continents in twelve different countries. They both started studying at MIT in the fall of 2002, and continued skating competitively for two years training with Dmitri Kazarlyga in Massachusetts. They competed at the 2003 World Figure skating Championships in Washington DC, while enrolled as full-time students, placing 21st among the best in the world. While at MIT, Jessica studied sciences, majoring in Brain and Cognitive Sciences and minoring in Biology, and Juha studied Economics and Finance and majored in Mathematics. After graduating in June of 2006, Jessica and Juha moved to Manhattan where they both work full time. After not skating for nearly two years they plan to participate in Ice Theatre of New York performances throughout the season.

HELEN HYUN-BOWLIN is a U.S.F.S.A. double Gold Medalist. Her love for dance began with ballet training until she learned to figure skate and found her passion for dancing on ice. She's had the opportunity to train at Detroit Skating Club with World and Olympic coach Liz Coates, and to work with National Ice Dance coach Yuri Tchesnitchenko. She has a B.A. in Psychology from Colgate University and an A.A.S. in Fashion Design from F.I.T. She joined the company last year in *Dance Visions on Ice*. Although she's thrilled to be skating with Ice Theatre, her greatest source of inspiration comes from her sons, Kyle (14) and Tyler (9).

DAVID LIU was born in Taiwan, immigrated to the United States at the age of six and began studying dance and figure skating at the age of eight. He auditioned for New York City Ballet's School of American Ballet (SAB) and was accepted on full scholarship, under the tutelage of Richard Rapp and Andre Kramerevsky. George Balanchine promoted him to the first "Special Class" at the SAB under the intensive training of the late Stanley Williams. After finishing his dance training at SAB, David pursued his skating career and competed at three Olympic Games for his native country, Taiwan. He teaches, choreographs and performs in both skating and dance. He has performed and given workshops and intensive classes in the United States, Taiwan, Japan, Hong Kong and Finland. Francis Mason of WQXR Radio called David, "Nijinsky on ice". Liu has choreographed at least five works for and/or with Ice Theatre in the years he has been with the Company, some of which were showcased in *Dance Visions on Ice* last season.

PETER MARTINS Peter Martins is Ballet Master in Chief of New York City Ballet, as well as Chairman of the Faculty of the School of American Ballet. He began his association with New York City Ballet in 1967, as a guest artist from the Royal Danish Ballet, before joining the Company as a principal dancer in 1970. Prior to retiring from dancing in 1983, Mr. Martins performed a tremendous variety of roles with the Company, and originated roles in many ballets by George Balanchine and Jerome Robbins. Since 1981, Mr. Martins has helped to run the Company, and since 1990, he has been Ballet Master in Chief. Under his leadership, New York City Ballet has added significantly to its repertory while maintaining the integrity of its core works, the 20th-century masterpieces by Balanchine and Robbins. Mr. Martins began his career as a choreographer in 1977 with *Calcium Light Night*, set to several pieces of music by Charles Ives, and has since created more than 70 ballets, many of them set to scores by contemporary American composers.

SUZANNE McDONALD currently trains in NJ under the tutelage of two-time Olympic Gold medalist, Evgeny Platov. She is the 2004 Senior Ladies Eastern Sectional Champion and is the current Senior Ladies North Atlantic Regional Bronze medalist. She also recently completed the Wine Spectator's ABC's of Wine course. This evening's performance marks McDonald's transition from apprentice to company performer.

JESSICA MILLS is the 1989 World Junior Champion, 7-time US National and International team member. Originally from Chicago, Jessica started skating at the age of six. She had already been studying ballet, speedskating and gymnastics. Ultimately, she chose Figure Skating, but still maintained her ballet studies throughout her skating career. At the age of 9 Jessica left home to train with Olympic coaches that took her all across the country. At one point, she took a season off to try her luck again at Short Track Speedskating where she became National Champion at age sixteen. Jessica received a Bachelor of Arts in Fashion Merchandising from Marymount University. Last year marked her debut as an Ensemble member with the Ice Theatre of New York in *Dance Visions on Ice*.

MOIRA NORTH (Founder/ Director) designated one of the 25 Most Influential Names in Figure Skating by International Figure Skating Magazine in 1998 and again in 2003, has been a driving force in the development of figure skating as a performing art. She and partner Patrick Dean skated Ice Theatre's first work, a collaboration with dance choreographer Marc Bogaerts, which won them first place in the 1984 Professional Championships in Jaca, Spain. In her subsequent work as Director of Ice Theatre, Moira has continued to integrate the work of dance and performance artists into the repertory of ice choreography and classes. Moira's artistic credits include teaching actress Ileana Douglas to skate for her role in the film *To Die For*; teaching and choreographing a skating scene in the film *The Preacher's Wife* with Whitney Houston and Denzel Washington; choreographing five productions of *Montreal Fashions on Ice* for the Quebec Delegation at Rockefeller Plaza; and choreographing the opening ceremonies for both the National Hockey League All-Stars Game and World Cup Hockey. She also served as creative consultant for Arts & Entertainment's *Winter Solstice on Ice*, a television special aired during the 1999 holiday season.

JONATHAN POITRAS was born and raised in Montreal, Canada. Jonathan Poitras first aspired to be a hockey player like Canadiens legend Guy Lafleur. Like Lafleur, he took figure skating lessons. But when he won a figure skating competition at age six, "suddenly, I wanted to be like Brian Orser." Through his early teens, he medaled as a singles skater in regional competitions, but a growth spurt destined him for his current discipline – pairs skating. For five years, he competed internationally in pairs at the Junior level before turning professional and joining Disney On Ice in 2000. A year later, he met his current partner, Robyn Sudkamp, and "We just clicked." In Disney On Ice presents Princess Classics, the pair's fluid, dynamic style is beautifully showcased. Says Jonathan, "It's all about trust." He is currently principal skater for Disney On Ice presents Princess Wishes.

JIRINA RIBBENS (Executive Director) joined the Ice Theatre of New York staff in December 2004, after serving on the Board since the founding of the company. Over the past 20 years Jirina has worked in a variety of positions in the entertainment and sports industries, including as Olympic sports consultant and producer for seven Olympic Winter Games and two Summer Games. In 2002 she was honored with the 2002 Sports Emmy for Outstanding Live Sports Special as Associate Producer for NBC for the Salt Lake City Olympic Winter Games. During her career at Candid Productions she produced and managed televised events worldwide with two-time Olympic Figure Skating Champion Dick Button. Jirina holds a Master of Arts Degree in Foreign Languages from the State University of Antwerp, Belgium and a coaching certification in figure skating and artistic roller skating from the Coaches Training Academy in Cologne, Germany. She is fluent in seven languages.

KATYA SEMOUKHINA was born and raised in Yekaterinburg, Russia, where she began her skating career. At the age of 15, she moved to U.S. where she trained with World and Olympic coaches like Natalia Dubova and Edouard Pliner. She is a U.S.F.S. A. Triple Gold Medalist and skated professionally with Ice Theatre of New York for five years. Katya was also a Valedictorian of Professional Performing Arts School in 1996. She went onto Hunter College and graduated Magna Cum Laude with a B.A. in Psychology. In 2002 Katya moved to Marlboro, Mass. where she worked with national and international level competitors including skaters from Haydenets and Colonial Synchro-teams. Katya returned to NYC last year to once again be a part of the Ice Theatre ensemble and perform in *Dance Visions on Ice*.

STEPHANIE SKAFF (Development) is a performing artist and writer who creates original theatre works, performs with the rock band, Frances, and contributes to the administration of non-profit arts organizations throughout NYC as a freelance grants writer and consultant. She has received awards from Princess Grace Foundation-USA and Puffin Foundation, Ltd., and was Artist-in-Residence at The Old American Can Factory in 2004/2005. She has worked with Ice Theatre of New York since the spring 2006.

CHENAULT SPENCE (Lighting Designer) is lighting designer for the Alvin Ailey American Dance Theatre, Cortez and Company, Saeko Ichinohi, SwingDance America, Broadway Dancin!, Cleveland Repertory Project and Connecticut Ballet. He has designed lighting for the Dance Theater of Harlem, Colorado Ballet, Washington Ballet, American Repertory Ballet, Julliard Dance Ensemble, Erick Hawkins, Jose Limon, Bat-Dor Dance Company and the National Ballet of Iran, and has been a guest lighting designer for ballet and modern dance companies and opera throughout the world. As lighting designer for The Opera Company of Philadelphia, Spence received Emmys for *The Damnation of Faust* and *Un Ballo in Maschera*, starring Luciano Pavarotti. With the Alvin Ailey Company, his work has been seen in New York at the City Center, Metropolitan Opera House, New York State Theater and in tour in the United States, Europe, Russia, South America, Africa and Asia. His works have been in television productions for PBS, ABC and other networks in more than thirty countries.

JOJO STARBUCK AND KEN SHELLEY competed their first U.S. National Championships in 1968, when both were only 16 years old, and immediately made the U.S. Olympic Team. By 1972, they were World bronze medalists and were competing in their second Olympics in Sapporo, Japan. Shelley was also the U.S. men's champion in 1972 and skated at the Olympics in both men's and pairs. After finishing their competitive careers as amateurs, Starbuck and Shelley continued their partnership, starrng together in *Ice Capades* as well as competing professionally. Starbuck had a solo career with John Curry's skating company. Shelley went on to a career in arts management, working with several theatrical companies, including the American Ballet Theatre.

ALYSSA STITH was born and raised in West Point, NY and spent the majority of her formative years on the ice as a competitive figure skater. She began dancing in 1996 while touring with Living the Dream Theatre Company and earned her BA with Distinction in Dance from Ohio State University in 2000. Since then she has been striving to translate dance to ice while training and performing in both areas. On the ice, Alyssa has been performing regularly with Ice Theatre of New York since 2000 and she was featured in *Dance Visions on Ice* this past season. She was a principal in Rory Flockhart's *Ebony on Ice! Soul Spectacular on Ice*. Off the ice, she has performed with several modern dance companies. She holds a Masters Degree in dance from New York University. She currently resides in Denmark where she is director of a local skating school.

ROBYN SUDKAMP thanks her mother for helping her become a figure skater. "She always loved skating," Robyn remembers. "When I expressed interest in it, she enrolled me in lessons." Robyn excelled as both a singles and pairs skater, medaling in regional competitions and taking third in Novice Nationals Pairs in 1991. Then, in 1992, her mother passed away unexpectedly. At the age of 15, Robyn continued to follow her and her mother's dreams in the sport of figure skating, knowing that her mother would be proud of her. In 1996, Robyn joined Disney On Ice and, in 2000, found the perfect pairs partner in Jonathan Poitras. "I'm skating my best ever," she says. "I definitely carry my mother's strength. She taught me to be disciplined, but have fun out there. Skating was her gift to me." Robyn hails from Denver, Co. She is currently principal skater for Disney On Ice presents Princess Wishes.

DAVID TANKERSLEY has competed in US National Figure Skating Championships and internationally as well. He first joined the Ice Theatre Ensemble in 2002 at the Stars, Stripes and Skates performance at Madison Square Garden, performing "On the Town." Also an actor and dancer, Tankersley went on a world tour of West Side Story, which opened at Teatro alla Scala in Milan, Italy, and continued to perform in Beirut and Japan. He previously joined productions of Evita, Sound of Music, Grease, Rock Stars (an off-Broadway show) and a European tour of Cabaret. This winter, Tankersley and Blank will appear in the Radio City Christmas spectacular.

DOUGLAS WEBSTER (Associate Artistic Director) has been connected with the Company for 13 years and he has created many critically acclaimed repertory works. Doug has been hailed by critic Elizabeth Kendall as one of the finest ice skating choreographers. Recently, Douglas worked on two productions for Disney on Ice including the current *Finding Nemo* and a production of *Pinocchio* for Europe's Holiday on Ice. He choreographed the Ice Theatre of New York segments in the A&E production Winter Solstice on Ice, the opening and closing of the first Stars, Stripes, and Skates benefit at Madison Square Garden, and the opening of the Sun Valley Skating Show. During his own professional skating career, Douglas starred as the Reverend in Footloose with Nancy Kerrigan, skated with professional partner Judy Blumberg, and appeared as a soloist in productions with Olympic Champions Scott Hamilton and John Curry. Douglas was also the Artistic Director of the Olympic arena in Salt Lake City for two years where he co-directed and ran a skating program and created a popular summer skating school.

GREG WITTROCK is an experimental ice theater artist who uses ice skating, self-made masks, and dance to explore, communicate and characterize the human condition in his one-of-a-kind ice show "Freezer Burn". He has performed at various venues throughout New York City including, Rockefeller Center, DKNY and H&M clothing stores, and appears in the documentary film "Dances of Ecstasy". Greg's masks, characters, and choreography work is featured in the rock video, "Down to the Sea", for U.K. recording artist Tim Booth.



Artistic Director/Founder
Moira North

Associate Artistic Director
Douglas Webster

Development
Stephanie Skaff

Executive Director
Jirina Ribbens

Ensemble Director
Judy Blumberg

Chairman
William Candee, III

Vice Chairman
Peter Eurich

President
Moira North

Secretary
Rose Auslander

Treasurer
Kathlin Feuerstein

Board of Trustees

George Akst
R. Palmer Baker, Jr.
Eri Chiang
Chip Connell
Arthur Donowski

Violet Eagan
Joan Erdheim
Mary Gaillard
James Goodale
Ruth Legon

Michel Mercure
Susan Numeroff
Guy Robinson
Jan Staller
Missy Van Buren

Debra Lewin Weiner
Cathy Pipitone Weisblum

Ice Theatre would like to thank the following individuals for support from Nov. 1, 2005 through Oct. 20, 2006:

ENDOWMENTS

Gertrude Vanderbilt

GUARDIAN ANGELS (\$5,000 or more)

Palmer Baker
Stephen Blauner
William Candee

Annie Goodman
Joan & Martin Erdheim
Anne Lichtblau

Michel Mercure
Susan and Marvin Numeroff
Kenneth Shelley

Angelo Silveri
Jan Staller

BENEFACTORS (\$2,500 or more)

George Akst
James Barker
Eri Chiang
Jay Colton
Violet & Christopher Eagan
Mary Eagan

Kathlin Feuerstein
Victoria Geduld
Jennifer Ortega & Curtis
Webster
Nancy Streeter
Lisa McGraw Webster

Cathy Weisblum
Mary Yelenick

ICE ANGELS (\$1,000 or more)

Judy & John Arnold
Karen Bechtel
Sharon Chantiles
Alicia Ernst & John Katzman
Peter Eurich
Michael Field
Ricky Galinson
Mary Gaillard

Debbie Gordon
Colleen Goujjane
Ann Parker Greenthal
Dean Hitzlik
John & Amy Hughes
Joseph Kasputys
Ruth Legon
Melanie Maslow

Linda G. Quest
Guy Robinson
Joan Scribner
Theora Shelley
Donna & Richard Soloway
Erwin & Pearl Staller
Elisabeth Stribling
Angela Ting

Missy VanBuren & Thomas
Brown
Debra Weiner
J. Wertz
Elaine Zayak

PATRONS (\$500 or more)

Ruby & Priscilla Andrade
John Belle
Lucy Joyce Brennan
Arthur Brown
Richard Carpenter
Keith C. Champagne
Ted & Mary Clarke
Mary Cook
Sonya & Peter Dunfield
John & Ruth Eagan
Linda & Stephen Gertler
James Goodale
Edith Greenwood
Janet Hansen

L. Allen Herrick
Joan Kaufman
Evelyn Kramer
Rebecca Leigh
Linda and Pat Lichty
Melanie Maslow
Marie L. Matthews
Ethel & Barney Mayrsohn
Denise Melikian
Robert Mellins
Caroline and Peter Moore
Willard Moore
Suna Murray
Jonnie and Barlow Nelson

Robert Pedersen
Elise Preston
Kimberly & Jean Putzer
Nancy Quaiße
Shawn Rettsatt
Genie & Martin Revson
Diane Samuels
Dana Schiff
Rhea Schwartz
Coco Shean
Kenneth Shelley
Clare Sheridan
Marian Shelton
Toni Slotkin

Edwin & Pearl Staller
Stephen & Maddie Tobias
Robin Wagner
Vera Wang
Tracy Watts
Alan Weinstein
Mira Slava Weiss
Christy Welker
Betsy & Doug Wilson
Anne Joyce Wyman
Aja Zanova Steindler

SPONSORS (\$250 or more)

John F. Acosta	Lawrence Dusich	Nancy Leamy	Thomas Ruffing
Matthew Andersen	Richard Dwyer	Terri Levine	Clare Sheridan
Carol Baumgartner	Gaye Ellington	Valery Levine	Robert Shaw
Denise Beaumont	Stephen Epstein	Bonnie Liggett	Susan Male Smith
Stan & Diane Belliveau	Joan Fallon	Janet Lombardo	Alberta & James Stith
Ray Belmonte	Charles Fetter	Marianne Lynn	Nina Subin
Jill Bigham	Lindsay Forness	Kate McBride	Gale Tanger
Judy Blumberg	Anne Gerli	Nancy Meiss	Tracy B. Taylor
Ann Marie Bucher	Audrae Gillespie	JoAnna Mendl Shaw	Deborah Thickey
Slavka Kohout Button	Gretchen Gross	Willard Moore	Stacy Trust
Linnea Capps	Robert Guida	Kim Morgan	Don Watson
Catherine Chalmers	Louise Guiper	Colleen Muscha	Alan Weinstein
Analee Cole	Jeffrey Hirscht	Emily Napoliton	Mira Slava Weiss
Enid Coleman	Myrna B. Hurwitz	Susan Neiman	Christy Welker
Chip Connell	Joan Kaufman	Carl Olsson	Sharon Wiggins
Janet & Leonard Connolly	Ron Katz	Deborah Page	Atoy Wilson
Howard Cortez	Ann Kavanagh	Darlene Parent	Joan Wilson
Edwin J. Cossitt	Terri Katz	Alice Park	
Denise DeBenedetto	Charles Kerner	Robert Pederson	
Teresa DiGianni	Donna Kreeger	Francine Port	
Dianne (Dede) Disbrow	Randall Lane	Joan Rozolis	

ASSOCIATES (\$100 or more)

Stephen Adler	Elizabeth & Phillip Grout	Marie L. Matthews	John C. Stiefel
Allen R. Bank	Anne Hess	Barney McHenry	Patricia Schmidt
Narena (Boots) Beyer	Sybil Hite	Susan McKimmens	Christy Welker
Jules Birnbaum	Taffy Holliday	Lisa Navarro	Ann Joyce Wyman
Barbara Camp	Virginia Holden Glover	Barton Nisonson	
Marnie Gordon	Lisa Lyons	Gabriella Paolini	

FRIENDS (\$50 or more)

Virginia Abrams	Oya Eraybar	Kam Lai Lee	Betsy Jo Spence
John D. Amsterdam	Josephine Feagley	Judith Nichols	Barbara Ann Stay
James Andrews	Julie Haas	Margaret Nyhus	R. Calvin Sutliff
Patricia & Gerald Blake	Nancy Hall	Natalie Rosenberg	Julio Vega
Ronald Bunker	Elizabeth Houilding	Karen Deutsch Rowland	Soon-Young Yoon
Mary Ann Cohen	Jayanti Kanal	Rodalind Seneca	
William Colton	Shirra Kenworthy	Margaret Shields	

CORPORATIONS

Ice Theatre of New York greatly appreciates support from July 1, 2005 through October 20, 2006 from the following entities:

Abilities!	Forest Laboratories, Inc.	The Peterson Foundation
AD+	Fotocare, Ltd.	The Rinx
AFA Asset Services, Inc.	Glenn Horowitz Bookseller	The Skyliners Synchronized Skating Teams
Arme Gems and Jewelry	Guggenheim	Tom Collins Enterprises
Bollinger	HPP Rinx Inc.	Tower Group Companies
Bone/Levine Architects	Intelliponse Inc.	TXX Transportation Services, Inc.
Brad Simon Organization	Johnson Foundation	Will Sears Foundation
Capital Trust Inc.	Kori	Wollman Rink
Caran Properties	Lisa McGraw Skating Foundation	Wonderland on Ice
Carter, Ledyard & Milburn LLP	Morrison & Foerster LLP	
Callan, Koster, Brady	Nazeem Family Foundation	
Charles and Lucille King Family Foundation	New England Amateur Skating Foundation	
Chautauqua Region Community Foundation	Ribet & Gordon	
Christoff Finio Architects	Richard T. Button Foundation	
Chelsea Piers, LP	Rolax Watch USA	
Chelsea Piers Yacht Services	Sarah Sayzie Carr Studio	
Chubb	Silverite Construction	
Debevoise & Plimpton	Skating Club of New York	
Devon Management Group	Smith Barney	
Figure Skating in Harlem	Sports & Arts in Schools Foundation	
Flagship Healthcare Management	Stan's Skate Shop	
Forbes, Inc.	Stribling & Associates	

Matching gifts from:

AIG
Clorox
J.P. Morgan Chase Foundation
Time Warner, Inc.

This event is made possible by public funds from the NYC Department of Cultural Affairs



SPECIAL ACKNOWLEDGMENT

to these individuals and others whom we might have missed

Make up for Ice Theatre of New York
provided by MAC Cosmetics

MAC

Video Production provided by
Pam Peterson, ESPN

Special Photography of Starbuck and Shelley:
Roy Blakey

Craig Cichy and MAC Cosmetics
Melody Champion

Joyce Mola

Ruth Rosenberg

Scott H. Schwartz, Graphic Design
Jeffrey Shaw and The Computer Bakery

Jessica Sokol, Web Designer

Jirina Ribbens and Doug Wilson, Video

Dana Thayer

Senior Vice President,
Chelsea Piers Management

Kenny Moir

Executive Director of Figure Skating
and Special Events
Sky Rink

Jim Bugenhagen

Asst. General Manager and Director of Hockey
Sky Rink

Abe Hernandez

Head of Maintenance
Sky Rink

FUNDERS

Carnegie Corporation

Bossak/Heilbron Charitable Foundation

Gertude Vanderbilt Endowment

Lisa McGraw Figure Skating Foundation

NYSCA

