

# The Cutting Edge

SPRING 2006

*Ice  
Theatre  
New York*

"ITNY...combines the agility and athleticism of figure skating with the grace of ballet, and pairs it with the artistry of some of contemporary dance's most celebrated choreographers."

— **Tom Pearson, NYC Dance Journal**

"...each (piece) proved that ice dancing isn't merely a sport. It's an expressive vehicle."

— **Rachel Straus, Dance Magazine**

"This was theater on a gleaming white surface in a space like an arctic circle. Each piece had a dramatic arc and told a tale...Technique served expression. Even the sound of blades cutting the ice had meaning."

— **Margo Jefferson, The New York Times**

## SAVE THE DATE

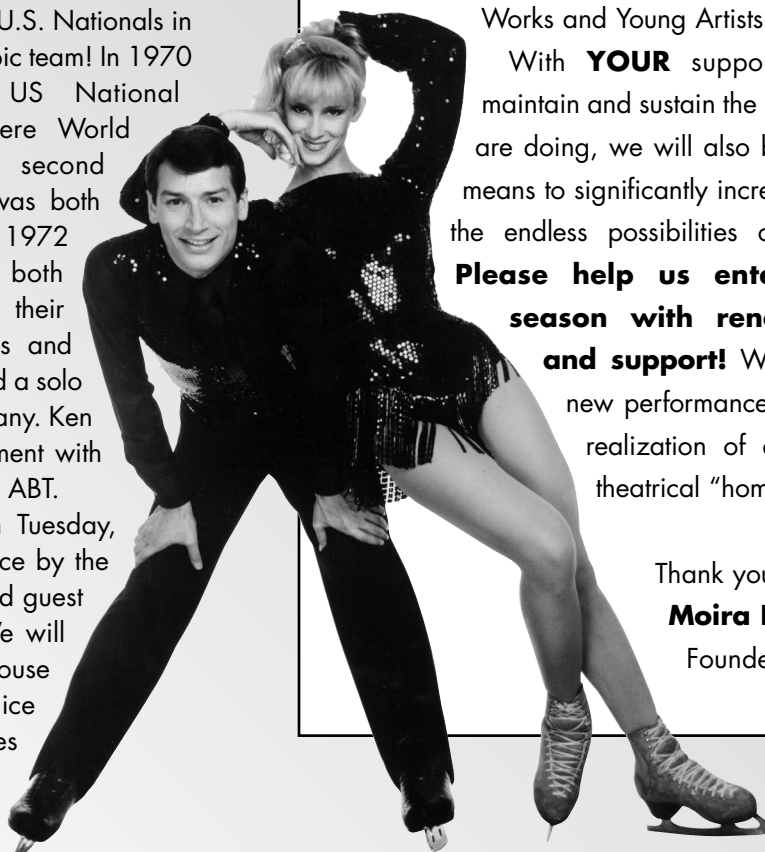
### 2006 BENEFIT GALA ANNOUNCEMENT

Please save the date for Ice Theatre of New York's October 24th **Performance & Benefit Gala** at Chelsea Piers in honor of **JoJo Starbuck and Ken Shelley**. Starbuck and Shelley are two-time Olympians, World Bronze Medalists and US Figure Skating Hall of Famers.

JoJo and Ken competed at their first U.S. Nationals in 1968 and right away made the Olympic team! In 1970 they won the first of three US National Championships. By 1972 they were World medalists and competed in their second Olympics in Sapporo, Japan. Ken was both Pairs and Men's U.S. Champion in 1972 and skated at the Olympics in both disciplines. JoJo and Ken continued their partnership, starring in Ice Capades and competing professionally. JoJo also had a solo career with John Curry's skating company. Ken went on to a career in arts management with several theatrical companies including ABT.

The event will begin at 7 PM on Tuesday, October 24, 2006 with a performance by the Ice Theatre of New York ensemble and guest stars at Chelsea Piers' Sky Rink. We will then adjourn to the fabulous Lighthouse (the event center directly below the ice rink) for cocktails, dinner and festivities honoring JoJo and Ken.

*JoJo Starbuck and Ken Shelley*



Dear Friends,

As another performance year concludes, I am excited to look back and share our progress with all of you. This year, our 21st Season, has been a particularly fruitful one and I hope that you will enjoy reading about all of our 2005-2006 activities and accomplishments.

We started out on October 15th with a performance of "**Dance Visions on Ice**" for the Staller Center for the Arts at Stony Brook University. Putting ice on their stage for a sold out audience was a great beginning to our performance season. In March 2006 we were commissioned to put ice on the stage of the Zoellner Arts Center at Lehigh University. With all of these successes we are hoping to profile our wonderful company on a stage right here in New York City in the Spring of 2007!

This coming Winter and Spring we again look forward to performing ice concerts at the **Pond at Bryant Park**, the **Rink at Rockefeller Plaza** and at **Riverbank State Park**, where we continue to develop our outreach programs for public school children, including the New Works and Young Artists Series.

With **YOUR** support we will not only maintain and sustain the important work that we are doing, we will also be able to provide the means to significantly increase our exploration of the endless possibilities of movement on ice. **Please help us enter our upcoming season with renewed enthusiasm and support!** We look forward to the new performance opportunities and the realization of a skating school and theatrical "home" in our future.

Thank you!

**Moira North**

Founder/Artistic Director

# THE YEAR IN REVIEW

Ice Theatre accomplished so many new and exciting projects this year. Our repertory works, performance opportunities, community outreach and administrative support all reached new heights in our 21st season.

We started the season with a presentation of **"Dance Visions on Ice"** at SUNY at Stony Brook's Staller Center for the Arts. This program was a wonderful

celebration of both dance and skating choreographers. We also installed ice onto the proscenium stage at Lehigh University's Zoellner Arts Center. **"Dance Visions on Ice"** was a big success with audiences in both venues, as well as during our Home Season at Sky Rink.

Ice Theatre of New York celebrated 21 years of artistic figure skating at its 2005 **Benefit Gala** by honoring one of the greatest skating legends of all times, **Ms. Aja Zanova Steindler**. Co-Chairs of the evening were Ms. Ivana Trump, long-time friend of Aja's; Dick Button, two-time Olympic Champion; and Tom Collins,

Producer of *Champions on Ice*. A cocktail party, delicious dinner and silent auction at the Lighthouse at Chelsea Piers followed the performance. Aja was thrilled and touched by the respect and testimonies including an amazing DVD on Aja's life produced by Doug Wilson.

Our annual **Rockefeller Center** and **Riverbank State Park Concert Series** were some of our best, and we were invited to perform ice concerts at **The Pond at Bryant Park**. All of the series were well attended, and we had a lot of fun. We look forward to another year at all of these venues!

## 2005 BENEFIT GALA PHOTO GALLERY



Moira North, Tom Collins, Ice Theatre Ensemble and Special Guests



Aja Zanova with Diane & Stan Belliveau



Douglas Webster, Judy Blumberg and David Liu



Tom Collins, Aja Zanova, Ivana Trump and Dick Button

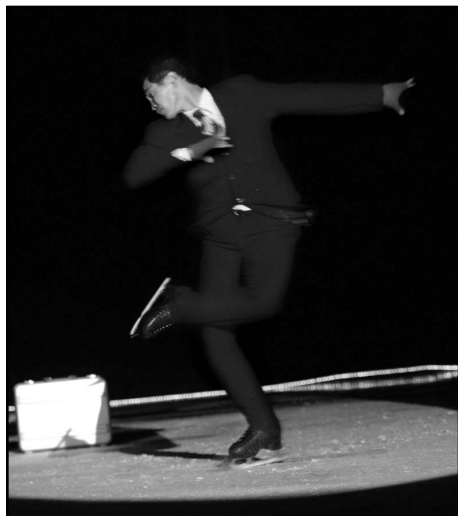


Martina Navratilova, Aja Zanova & Ivana Trump



BIC Presentation to Aja Zanova, Doug Wilson, Kathy Feuerstein and Moira North

# HIGHLIGHTS



David Liu in "Rituals in 7's"



Yukina Ota in "Madame Butterfly"



Ice Theatre Ensemble



Rockefeller Center Tree Lighting



Ensemble members applying  
MAC Cosmetics



New Works & Young Artist Series at Riverbank State Park



2006 Olympic Champions  
Tatiana Navka & Roman Kostomarov

## EDUCATION AND OUTREACH

Our Outreach Program continues to grow and flourish! ITNY is proud to have concluded its eleventh season of the **New Works and Young Artists Series at Riverbank State Park**. This program includes free performances and skating clinics for young audiences. This year we reached more than 2,500 public school children from Harlem and Washington Heights. This year was probably our best presentation EVER of professional talent and choreography from the company. Guest artists included Craig Heath, Yukina Ota, and Kim Navarro & Brent Bommentre.

We were also able to provide valuable performance opportunities for young apprentices to the company. Joining us for our April 6th presentation was long-time company member, Beth Woronoff, and her youth ice theater



Suzanne McDonald teaches skating clinic.

group from Saugerties. We look forward to working with Beth and her skaters when we do our residency in Saugerties this upcoming season!

We also supervised another successful series of skating clinics at Sky Rink and Riverbank Rink during spring break for the **JPMorgan Chase Sports and Arts Festival**.

Participation in the skating portion of the Festival was up again this year!

Continuing to provide other organizations with skating talent, teaching or tickets for their own causes, Ice Theatre participated with Figure



Beth Woronoff assisting young skaters

Skating in Harlem and NYU's annual skating event, among others. Special thanks to all the teachers and youngsters for their participation in these programs!

## SPECIAL EVENTS



Ice Theatre Ensemble, Gia Guddat and Jirina Ribbens.

### Some of the special events Ice Theatre produced or participated in this past season:

Xmas in July	Wang Center, Boston, MA
Corporate Video	Price Waterhouse
Christmas Tree Lighting	Rock Center, Bryant Park & Riverbank State Park
New Year's Eve Event	Turning Stone Casino, Verona, NY
Holiday Party	White & Case, Rock Center
Weatherproof Garment	Bryant Park
Fashion Show	Chelsea Piers
NYU Staff Party	Food Network
Television Promo	Rock Center
Goldwell Hair Fashion Show	Speed Skating Oval, Salt Lake City
Cingular Summit	

## ENDOWMENT

### REMEMBERING GERTRUDE VANDERBILT

I can remember Gertrude Vanderbilt, from an evening when my daughter Mary was two years old. Gert and her then husband, like my wife Alma, were New York Ranger fans and they had a box at the Garden. Mary was the youngest fan in the Garden that night and the Rangers won. In her mid-life, Gertrude became an enthusiastic supporter and practitioner of ballroom dancing. She was a supporter of the American Ballroom Theater. She also saw an Ice Theatre performance and fell in love with the company, its work and Moira. She was a regular supporter of Ice Theatre at every one of its benefits until last year when her health was failing. At her death last year, she remembered Ice Theatre in her Will with a bequest of \$150,000, which is now held by Ice Theatre in a separate fund as an **endowment**. The interest of these funds will be applied to a **choreographic commission** each year in her memory. She herself studied and practiced ballroom dancing with professionals such as Peter DiFalco, who will be the recipient of this first commission. Most of all, she was her own lovely person.



Gertrude Vanderbilt

— Palmer Baker

Pier 59, Suite 5911  
New York, NY 10011  
P: 212.929.5811  
F: 212.929.0105  
www.icetheatre.org  
itny@icetheatre.org

ARTISTIC DIRECTOR/FOUNDER  
Moira North  
EXECUTIVE DIRECTOR  
Jirina Ribbens  
ASSOCIATE ARTISTIC DIRECTOR  
Douglas Webster  
ENSEMBLE DIRECTOR  
Judy Blumberg

CHAIRMAN  
William Candee, III

VICE CHAIRMAN  
Peter Eurich

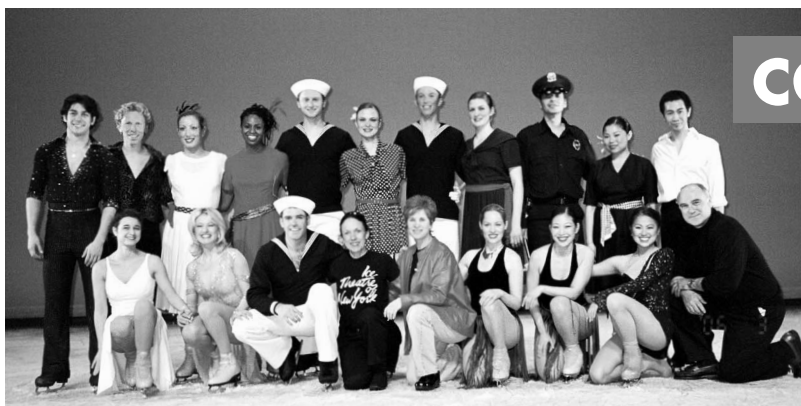
PRESIDENT  
Moira North

SECRETARY  
Rose Auslander

TREASURER  
Kathlin Feuerstein

BOARD OF TRUSTEES  
George Akst  
R. Palmer Baker, Jr.  
Eri Chiang  
Chip Connell  
Arthur Donowski  
Violet Eagan  
Joan Erdheim  
Mary Gaillard  
James Goodale  
Ruth Legon  
Michel Mercure  
Susan Numeroff  
Guy Robinson  
Jan Staller  
Missy Van Buren  
Debra Lewin Weiner  
Cathy Pipitone Weisblum

ADVISORY COUNCIL  
Elise Bernhardt  
Dick Button  
Ann Carlson  
Jay Colton  
Patrick Hourcade  
Meredith Monk  
Joan Scribner  
Ken Shelley



## COMPANY NEWS

Ice Theatre Ensemble  
on stage at  
Lehigh University

Over the Christmas Holiday, Founder/Director, **Moira North**, gave a kidney to her husband, **Jay Colton** (long time photographic contributor to "The Cutting Edge".) Both are doing very well and understand that this has brought new meaning to "giving" in both of their lives and the importance of organ donation. They would like to thank everyone that has helped in this incredible process!

**Judy Blumberg**, Ice Theatre's Ensemble Director and an Integrative Nutritional Consultant, finished the competitive season on a high, with **Maia** and **Alex Shibutani** capturing the National Intermediate Dance Championship in December. On another front, Judy is anxiously awaiting her adoption referral from China for a healthy baby girl. Should be very soon!

Associate Artistic Director, **Douglas Webster**, participated in Dancing on Ice this year with **Jayne Torvill** and **Christopher Dean**, joining their return to the stage after an eight-year hiatus! Over 11 million people watched the premier episode of the show.

**Alyssa Stith**, who is currently teaching and dancing in Denmark, returned to NYC for the ITNY season and our performance at Zoellner Arts Center.

**Kim Navarro**, with her new partner **Brent Bommentre**, were given the Most Outstanding Performance Award by the PSA. Kim now trains in Ardmore at the University of Delaware in Newark with coach **Robbie Kaine**.

**Craig Heath**, making his debut as guest artist with Ice Theatre, impressed audiences at Zoellner Arts Center in Lehigh, PA, Rockefeller Center and Riverbank State Park in NYC, with his vivacious personality and spinning expertise.

**Susan Pereira Wilsey**, former Ice Theatre cast member, welcomed a baby boy Oliver into her family in October 2005. Susan tells us that older son Rocco adores his time on the ice, and they are busy preparing a mother-

son duet in the near future.

Congratulations to **Tatiana Navka** and **Roman Kostomarov**, our guest stars this past season at the Staller performance and our Home Season. They are the newly-crowned 2006 Olympic Ice Dance Champions.

Ice Theatre welcomed **Stephanie Skaff** to the Company, as our Grants Administrator. She comes to us from our friend and collaborator, **JoAnna Mendl Shaw**.

**Josef Sabovick** and **Stephanie Rosenthal** joined the company for the Cingular Summit in their hometown of Salt Lake City. Stephanie regaled the crowd with her hip-hop routine, which also garnered her an award at this year's US Figure Skating Nationals.

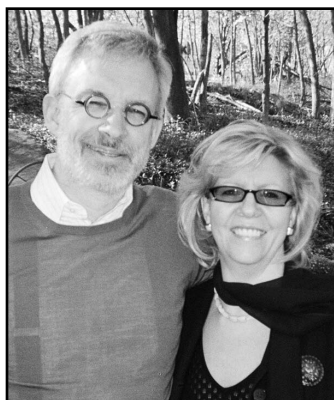
Former company member, **Gary Beacom**, has written "Vade Mecum" a handbook to skating and life. With comments by such skating greats as Sandra Bezic, Kurt Browning and Dick Button, this is a fascinating read!

Congratulations to former company member, **Trina Pierre**, who recently graduated from Parsons School of Design. We hope that she will design some costumes for us in the near future!

Ice Theatre company member, **Emanuele Ancorini**, did a spoofy pairskating routine with a lobster in a promo for the Food Network.

Ice Theatre also says a big thank you to **Melody Champion**, **Julia Gordon**, **Beth Hurwitz**, **Emma** and **Raye Levine**, **Erin Melikian**, **Marilyn Meyerson**, **Joyce Mola**, **Jeffrey Shaw** of Computer Bakery, **Jessica Sokol**, and all of our volunteers and interns who have helped out this past year. We couldn't do it without you!

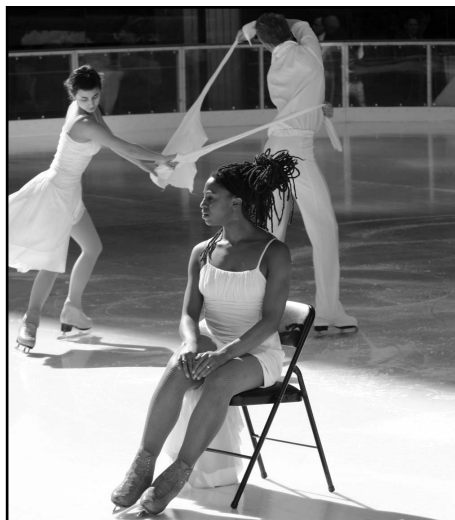
Finally, an enormous congratulations to Ice Theatre's Executive Director, **Jirina Ribbens**, who is very newly-engaged to her sweetheart, **Christopher Archer**.



Chris Archer & Jirina Ribbens

# Ice Theatre of New York

Line Haddad, Alyssa Stith and Tyrrell Gene in David Liu's "2:1"



## JOIN THE NY STAGE COMMITTEE

One of the most exciting ways to see Ice Theatre perform is on the proscenium stage! Help us realize our dream of performing on a proscenium stage right here in New York City in the Spring of 2007. You will work up close & personal with the Ice Theatre staff, board of directors and volunteers to give our dancers/skaters the opportunity to perform on a NY stage. Join the NY Stage Committee by contacting the Executive Director, Jirina Ribbens, at (212) 929 5811 or via email at [itny@icetheatre.org](mailto:itny@icetheatre.org).



Ice Theatre's Ensemble in Douglas Webster's "On The Town"

### MARK OUR UPCOMING EVENTS

#### 2006 BENEFIT GALA

The Lighthouse, Chelsea Piers  
Monday, October 24, 2006

#### ICE CONCERT SERIES

October 2006 through April 2007  
Bryant Park, Rockefeller Center and  
Riverbank State Park

#### HOME SEASON

Spring of 2007  
Proscenium Stage in New York City  
Details will be announced on the website

To learn more about the Company and its upcoming activities, please visit our website at [www.icetheatre.org](http://www.icetheatre.org).

## ACKNOWLEDGEMENTS

Ice Theatre of New York wishes to thank all of its supporters for their contributions, and acknowledges the continuing support of:

Make up for Ice Theatre of New York  
provided by MAC Cosmetics

**MAC**

Brad Simon Organization  
Carnegie Corporation of New York  
Carter, Ledyard & Milburn LLP  
Chelsea Piers, LP  
McGraw Skating Foundation  
NYC Department of Cultural Affairs  
New York Community Foundation/Lila  
Acheson Wallace Readers Digest Fund

NY State Council on the Arts  
Skating Club of New York  
Smith Barney  
Sports & Arts in Schools Foundation  
The Peterson Foundation  
Matching gifts from:  
AIG, Clorox, J.P. Morgan Chase Foundation,  
Time Warner, Inc.

## The Cutting Edge

### Editorial Board & Contributors

Judy Blumberg  
Moir North  
Jirina Ribbens  
Stephanie Skaff  
Douglas Webster

### Design

Scott H. Schwartz

### Photography

Judith Angel  
Jay Colton  
Michelle DeBlasi  
Arthur Donowski  
Kenny Jacobson  
Irena Sapilak

The Cutting Edge  
copyright © 2006,  
Ice Theatre of New York, Inc.

To obtain permission to reproduce or to purchase images in this newsletter, please contact our office at Ice Theatre of New York, Pier 59 Suite 5911, New York, NY 10011 or call (212) 929-5811.

The Cutting Edge  
welcomes article submissions.